

Family of products with conic aesthetic composed by plant pots, umbrella stand and paper bins produced in aluminum and an upholstered pouf with casters which facilitates the movement. It's disposition in different functionalities and finishings offers many possibilities.

Familia de productos de estética cónica compuesta por jardineras, paraguero y papelera fabricadas en aluminio y puf tapizado con ruedas que facilitan su movimiento. Su disposición en diferentes funcionalidades y acabados ofrece un amplio abanico de posibilidades.

Conee\_L\_M\_S



textured forge grey  
· gris forja tex.



textured black  
· negro tex. RAL 9011



textured white  
· blanco tex.

Conee\_P



beige · beige



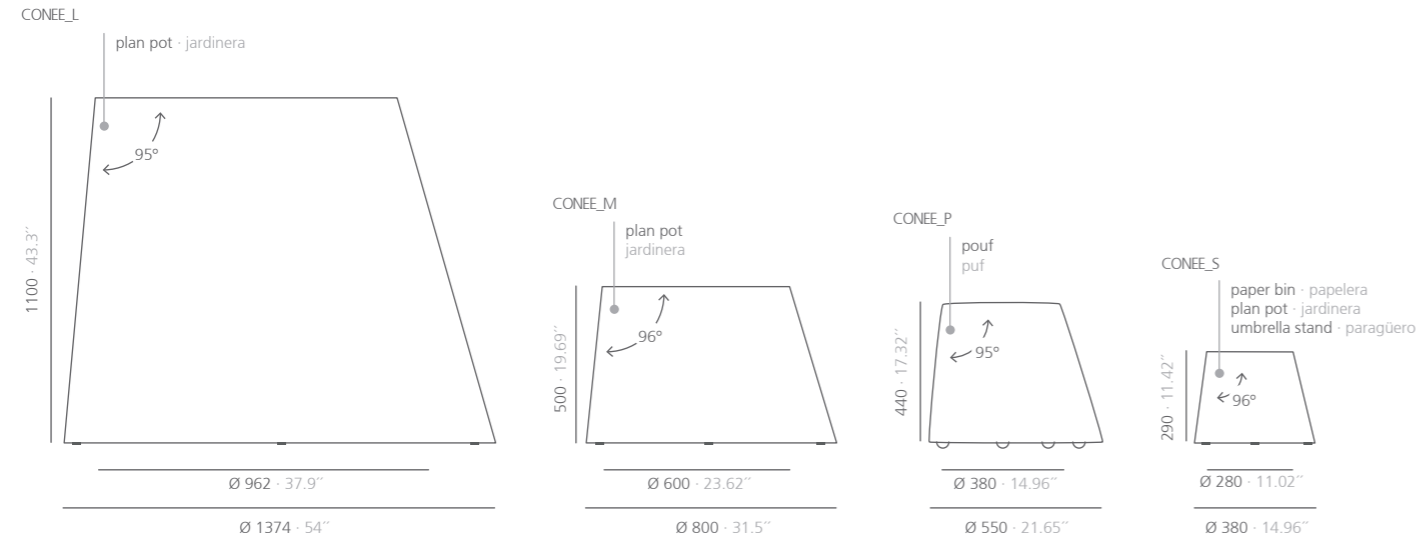
red · rojo



white · blanco



black · negro







casters · ruedas

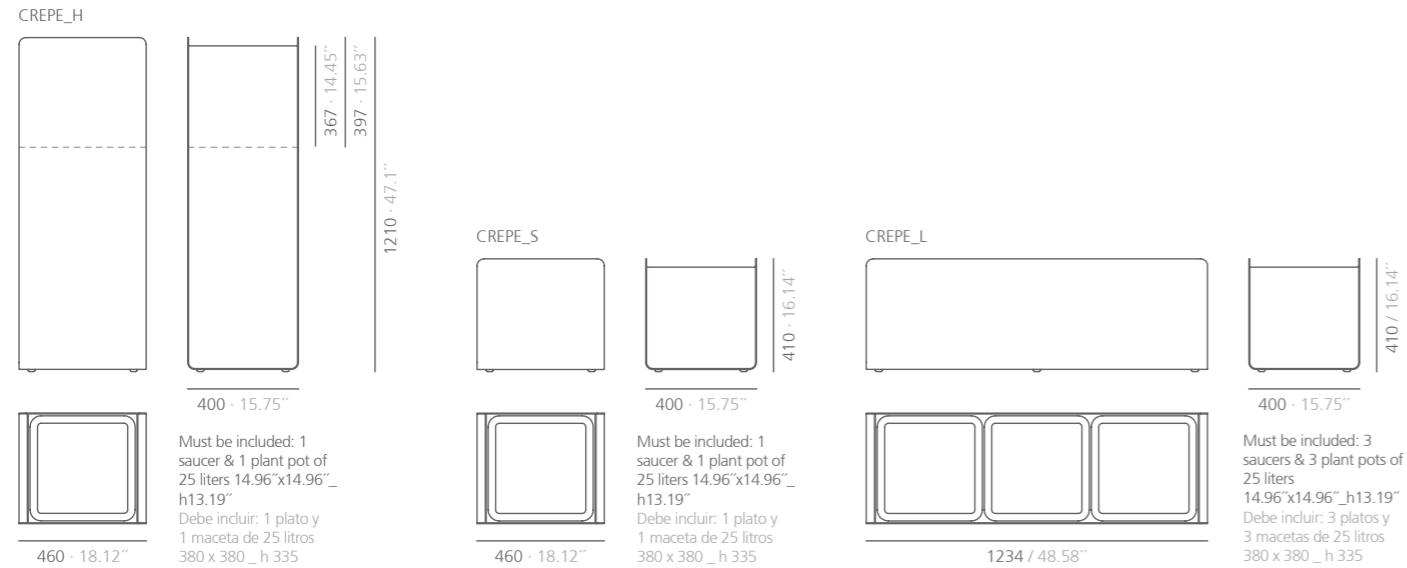


# crepe

Víctor Carrasco

This collection of plant pots includes three models. Made of folded aluminum sheet and painted in different finishes.

Esta colección de maceteros incluye tres modelos. Fabricados en plancha de aluminio plegada y pintada en diferentes acabados.



mm · inches



# 1

- sala de conferencias 1.01
- cafeteria 1.02
- sala de plenos 1.03
- sala auditorio 1.04



**TORRES**  
Oficinas



# green light

Mermelada Estudio

## TORRES Oficinas

The design of this plant pots evokes lamps emitting vegetation. Manufactured in aluminium and steel.

El diseño de estos maceteros evoca lámparas que emiten vegetación. Fabricados en aluminio y acero.

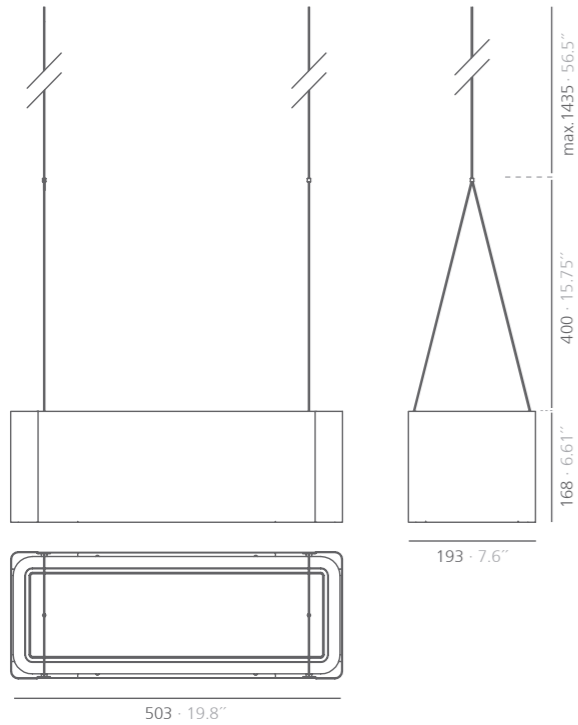


black - negro  
RAL 9011

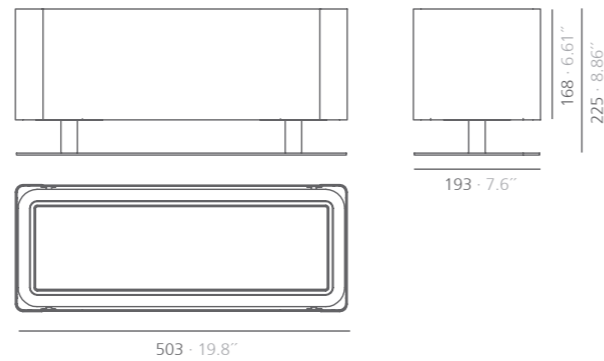


white - blanco  
RAL 9010

GREEN LIGHT\_C



GREEN LIGHT\_T







**TORRES**  
Oficinas



**TORRES**  
Oficinas



# green cloud

Mermelada Estudio

# TORRES

Oficinas

The design of this plant pots evokes lamps emitting vegetation. Manufactured in aluminium and steel. It includes a saucer.

El diseño de estos maceteros evoca lámparas que emiten vegetación. Fabricados en aluminio y acero. Incluye un plato para contener las macetas.



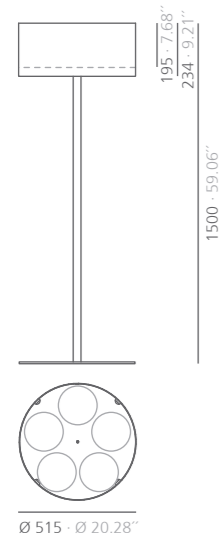
black · negro  
RAL 9011



white · blanco  
RAL 9010

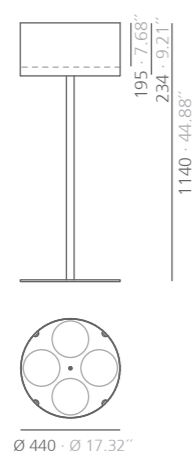


GREEN LIGHT\_L



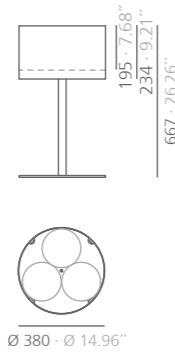
Must be included:  
5 flower pots of 2,8 liters  
Ø 6.69" · h 7.09"  
Debe incluir:  
5 macetas de 2,8 litros  
Ø 170 · h 180

GREEN LIGHT\_M



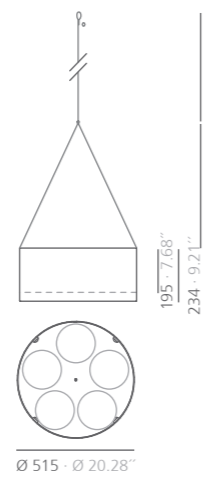
Must be included:  
4 flower pots of 2,8 liters  
Ø 6.69" · h 7.09"  
Debe incluir:  
4 macetas de 2,8 litros  
Ø 170 · h 180

GREEN LIGHT\_S



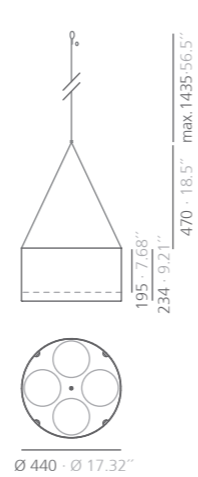
Must be included:  
3 flower pots of 2,8 liters  
Ø 6.69" · h 7.09"  
Debe incluir:  
3 macetas de 2,8 litros  
Ø 170 · h 180

GREEN CLOUD\_L



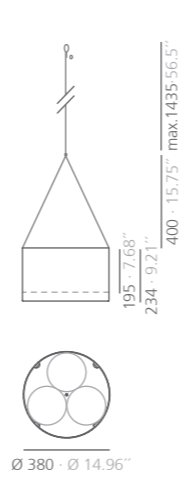
Must be included:  
5 flower pots of 2,8 liters  
Ø 6.69" · h 7.09"  
Debe incluir:  
5 macetas de 2,8 litros  
Ø 170 · h 180

GREEN CLOUD\_M



Must be included:  
4 flower pots of 2,8 liters  
Ø 6.69" · h 7.09"  
Debe incluir:  
4 macetas de 2,8 litros  
Ø 170 · h 180

GREEN CLOUD\_S



Must be included:  
3 flower pots of 2,8 liters  
Ø 6.69" · h 7.09"  
Debe incluir:  
3 macetas de 2,8 litros  
Ø 170 · h 180





**TORRES**

Oficinas



**TORRES**

Oficinas





# hold daily

Estudio Enblanc

**TORRES**  
Oficinas

The new version Hold Daily is each time nearer to the perfect auxiliar furniture for working spaces. Higher than the Hold Office not only has more capacity but also more movement facility thanks to its special casters of 64 mm of diameter.

Available in two versions Hold Daily DR with door and locker or Hold Daily BX with box. Produced in a folded steel sheet, painted with poliester paint.

La nueva versión Hold Daily se acerca, aun más si cabe, al perfecto mueble auxiliar para los espacios de trabajo. Más alta que la Hold Office no únicamente tiene más capacidad si no también mayor facilidad de movimiento gracias a sus ruedas especiales de 64 mm de diámetro.

Disponibles dos versiones: Hold Daily DR con puerta y cerradura o Hold Daily BX con cajón. Fabricado en plancha de acero plegada, recubierta con pintura de poliéster.



grey beige  
· gris beige  
RAL 1019



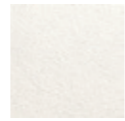
mustard  
· mostaza  
RAL 1012



textured forge  
grey  
· gris forja tex.



textured black  
· negro tex.  
RAL 9011



textured white  
· blanco tex.

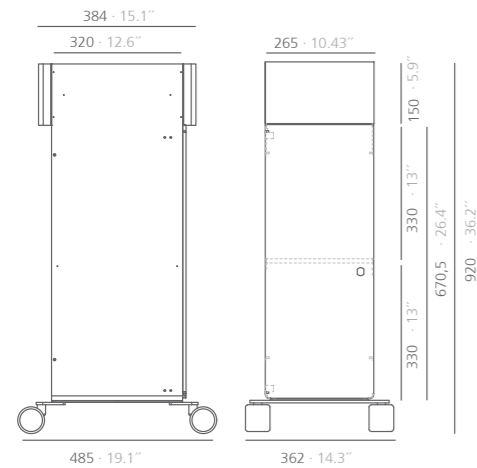
### Casters

· Ruedas

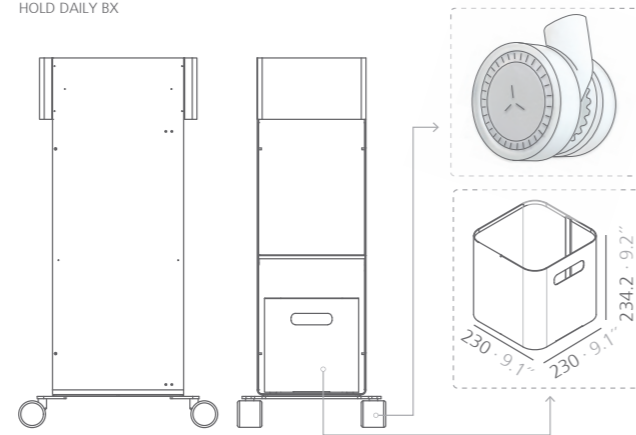


white - blanco

#### HOLD DAILY DR



#### HOLD DAILY BX





# hold series

Estudio Enblanc

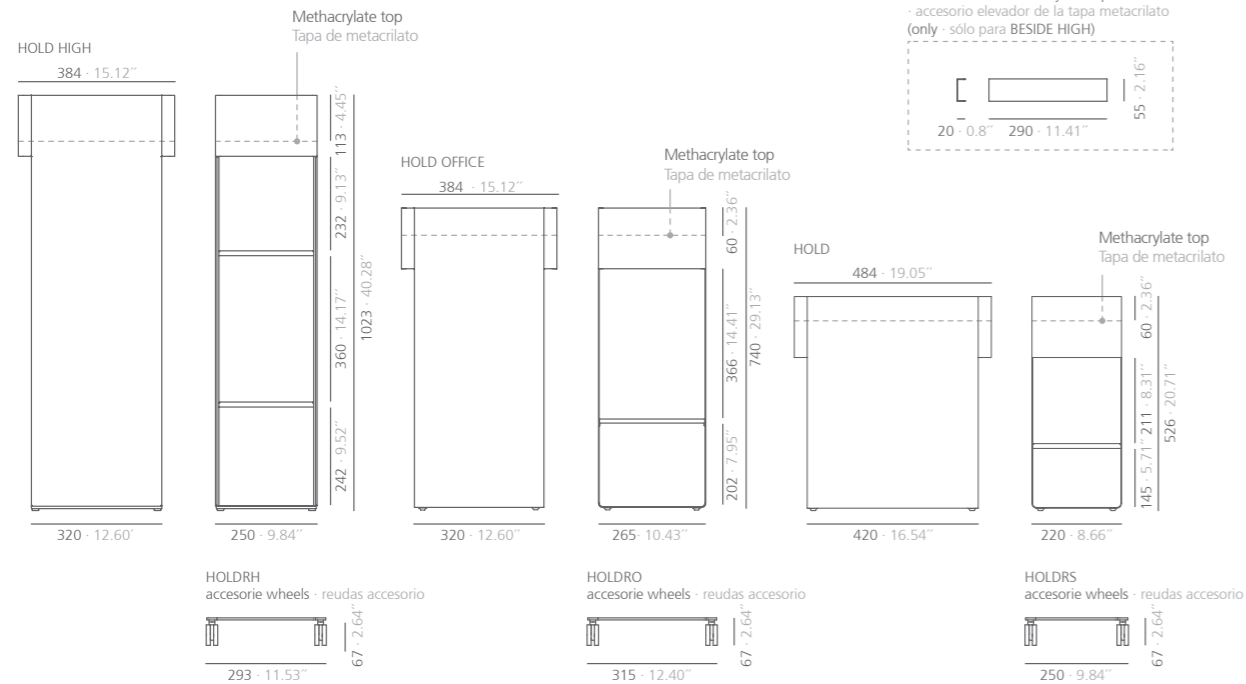
# TORRES

Oficinas

Due to its design and functionality this auxiliary element fits perfectly into multiple spaces: bedrooms, kitchens, bathrooms, offices...  
Manufactured in folded steel sheet and coated with polyester paint.

Elemento auxiliar que gracias a sus diseños y funcionalidad encaja perfectamente en múltiples espacios: habitaciones, cocinas, baños, oficinas...

Fabricado en plancha de acero plegada, recubierta con pintura de poliéster.







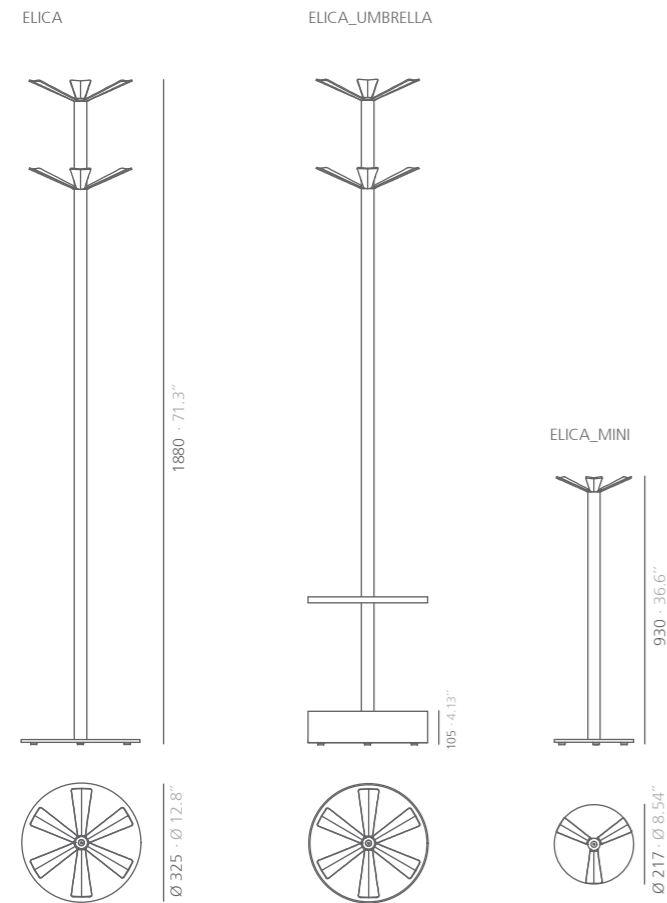
**TORRES**

Oficinas



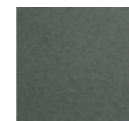
Our original Elica has two new family members: Elica umbrella with the double function of umbrella stand and coat rack and Elica mini, a light weight, portable and of personal use coat rack, so whenever you are sitting down in a restaurant, library, cafe or in your work place, you can have your belongings near.

A nuestra Elica original se han añadido para formar esta nueva familia: Elica umbrella con la doble función de paraguero y perchero y Elica mini, un perchero ligero, portátil y de uso personal para que siempre que estés sentado en un restaurante, una biblioteca, cafetería o puesto de trabajo, puedas tener tus pertenencias cerca y a la vista.

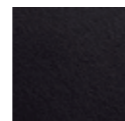


Base, hangers and umbrella stand

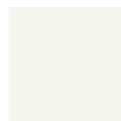
· Base, colgadores y paraguero



textured forge  
grey  
· gris forja tex.



textured black  
· negro tex.  
RAL 9011

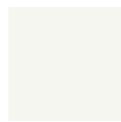


white · blanco  
RAL 9010

Column · Columna



anodized  
aluminium  
· aluminio  
anodizado



white · blanco  
RAL 9010



**TORRES**  
Oficinas





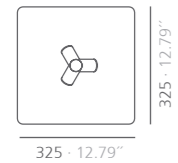
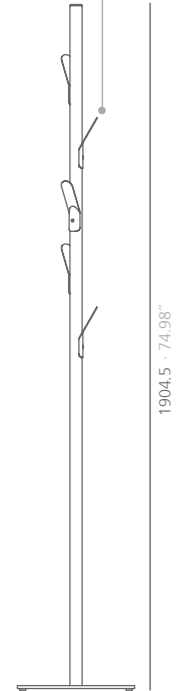




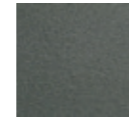
Coat stand with metallic hangers that evoke the branches of a tree. Available in several finishes.

Perchero con colgadores metálicos que evocan a las ramas de los árboles. Disponible en varios acabados.

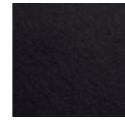
BRANCH — 5 hangers · 5 colgadores



Base and hangers · Base y colgadores



textured forge  
grey  
· gris forja tex.



textured black  
· negro tex.  
RAL 9011



white · blanco  
RAL 9010

Column · Columna



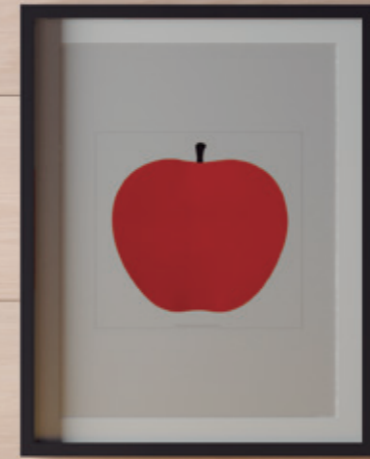
anodized  
aluminium  
· aluminio  
anodizado



white · blanco  
RAL 9010



**TORRES**  
Oficinas



# second tree

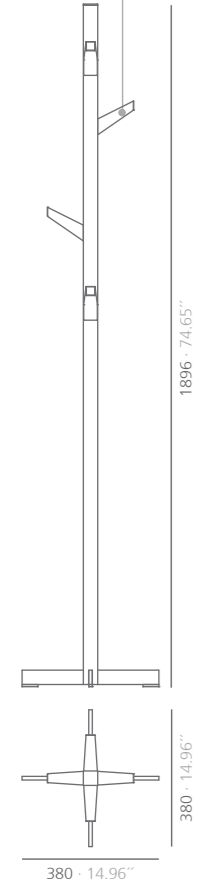
Pablo Gironés

**TORRES**  
Oficinas

The coat stand Second Tree is the abstraction of the nature forms, conserving the oak-tree's soul and warmth. It stands out for its fine finish, following Systemtronic's quality philosophy, and the contrast that provides combining a noble material with steel.

El perchero Second Tree es la abstracción de formas de la naturaleza conservando el alma y la calidez del roble. Destaca por la calidad de su acabado y el contraste que aporta el combinar el material noble con el acero.

SECOND TREE — 5 hangers · 5 colgadores

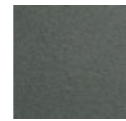


### Hangers · Colgadores



oak wood  
· roble

### Column and base · Columna y base



textured forge  
grey  
· gris forja tex.



black · negro  
RAL 9011



white · blanco  
RAL 9010



mm · inches

**TORRES**

Oficinas



**TORRES**

Oficinas



ker

Lluïsa Morató

TORRES

Oficinas

Exclusive coat stand formed by beech wood bars and a steel ring, painted in several colours.

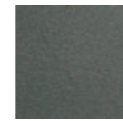
Exclusivo perchero compuesto por barras de madera de haya y un aro de acero pintado en varios colores.

Bars · Barras



beech wood  
· haya

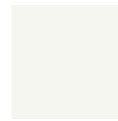
Ring · Aro



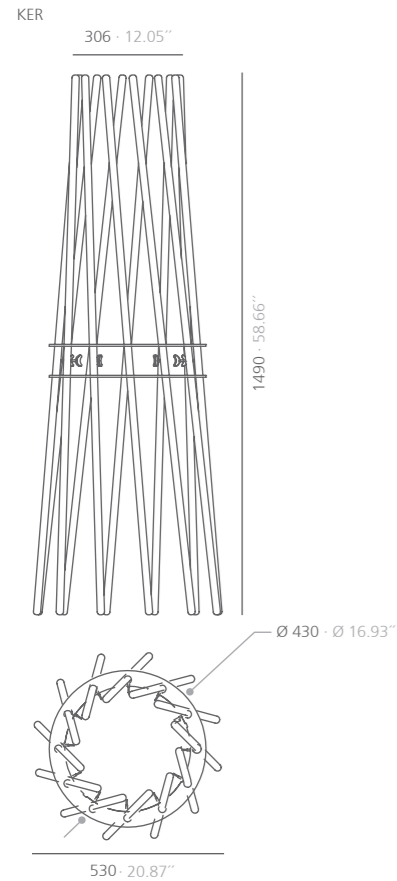
textured forge  
grey  
· gris forja tex.



textured black ·  
negro tex.  
RAL 9011



textured white ·  
blanco tex.







**TORRES**  
Oficinas

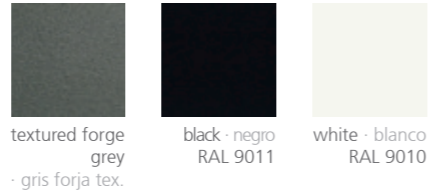


The lightness and stability defines this piece. A coat rack formed by two columns of anodized aluminium with a matt silver finish. There are two versions with casters or adjustable feet. Its steel base and bottom rail may have a white, black or forge grey finish. One of its versions allows adapting metallic shelves adjustable in height and a base cover.

La ligereza y la estabilidad definen a esta pieza. Perchero compuesto por dos columnas de aluminio anodizado con un acabado plata mate, disponible con ruedas o pies regulables. Su base y travesaño inferior de acero pueden tener un acabado blanco, negro o gris forja, barra superior cromada mate. El Inlin de anchura 758 mm permite adaptar estantes metálicos regulables en altura y una tapa en la base.

Aprox. capacity · Capacidad aproximada  
 Inlin 758: 10 - 12 hangers · perchas  
 Inlin 1500: 20 - 25 hangers · perchas

Shelves and base · Estantes y base



Columns · Columnas

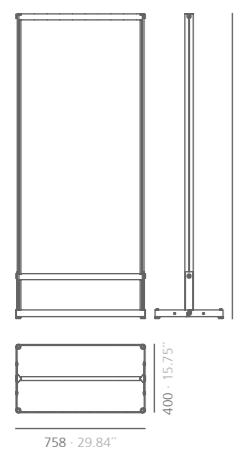


Top crossbar

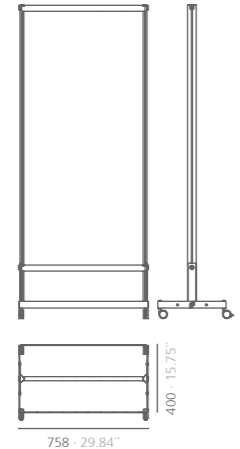
· Travesaño superior



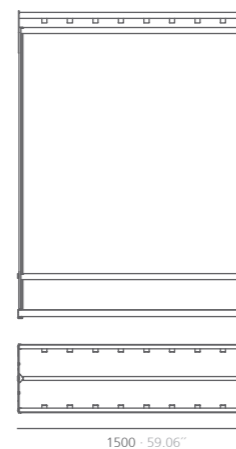
INL7PF / INL15PF  
 adjustable feet · pies regulables



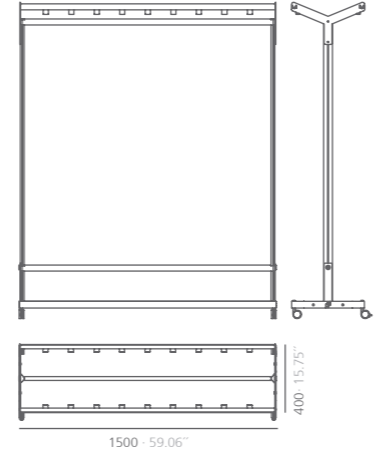
INL7RD / INL15RD  
 wheels · ruedas



INLD15PF  
 adjustable feet · pies regulables



INLD15RD  
 wheels · ruedas





**TORRES**  
Oficinas

Stylish and lightweight hangers made in sandblasted aluminium available with alphanumeric identification or without it. This hangers complement the other Systemtronic products as: Inlin, Buraco, Pointo, Climb...

Minimum order of 10 units is required for alphanumeric identification (0-9). Code letters according to availability of stock.

Elegantes y ligeras perchas de aluminio arenado disponibles con identificación alfanumérica o sin esta.

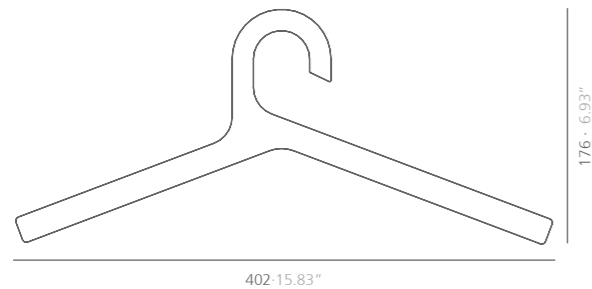
Estas perchas complementan los productos de Systemtronic como: Inlin, Buraco, Pointo, Climb...

Para pedidos de perchas con identificación alfanumérica, la cantidad mínima es de 10 uds del 0 al 9. La letra varía según disponibilidad en stock: A0-A9, B0-B9, etc...

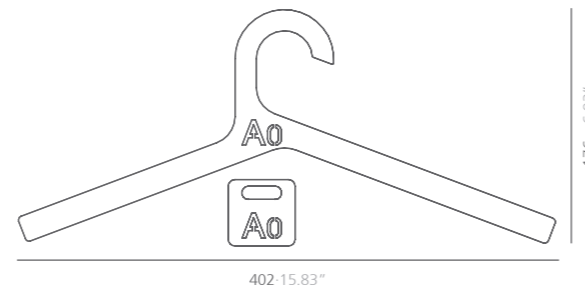


sandblasted aluminium  
· aluminio arenado

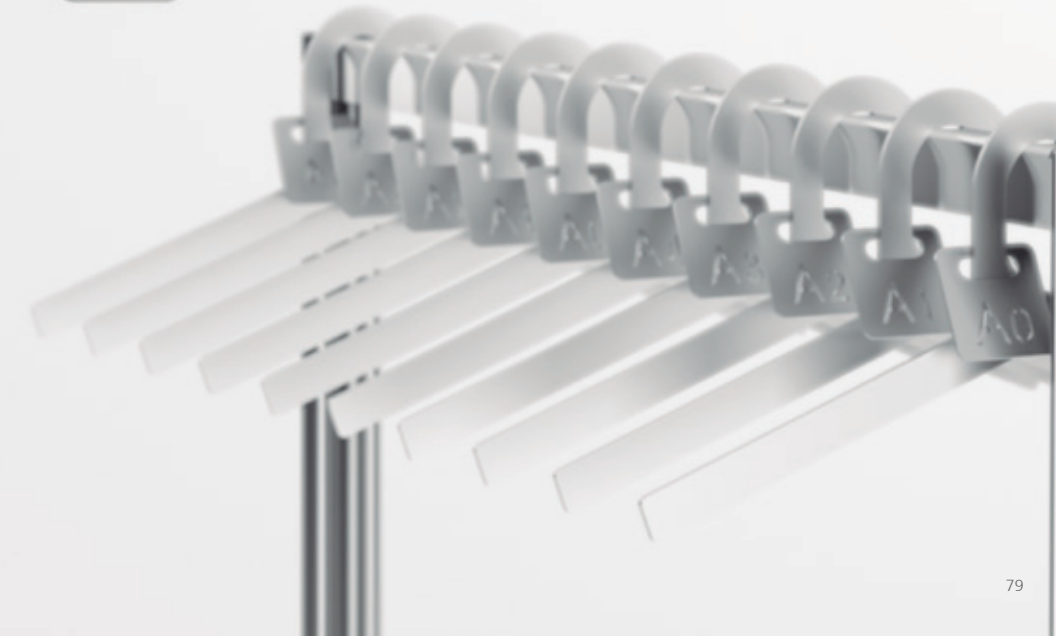
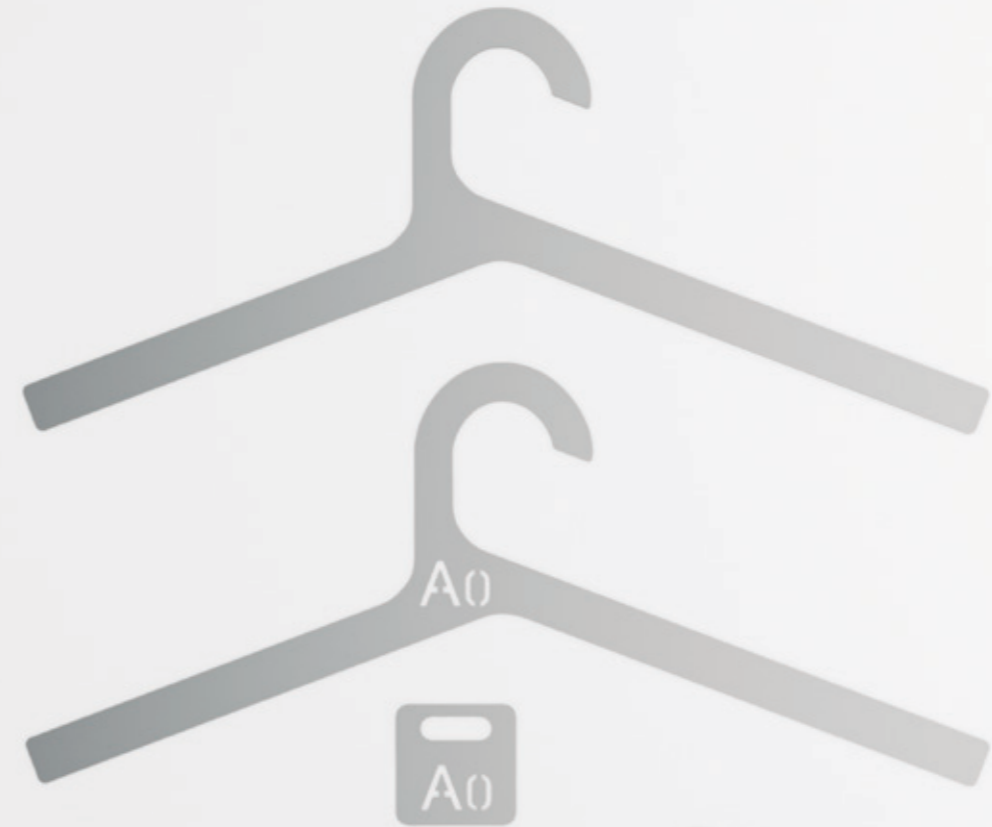
INLPC



INLPCIN



mm · inches



Wall hangers made of folded and painted steel sheet. Its design makes it an interesting, functional and decorative element.

Colgadores de pared fabricados en plancha de acero plegada y pintada. Su diseño lo convierten en un interesante elemento a nivel funcional y decorativo.



grey beige  
· gris beige  
RAL 1019



mustard  
· mostaza  
RAL 1012

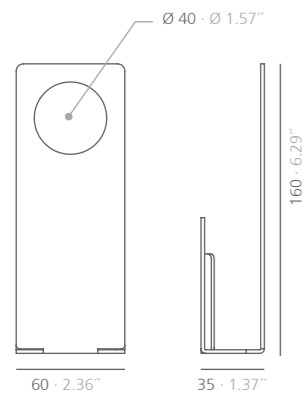


black · negro  
RAL 9011

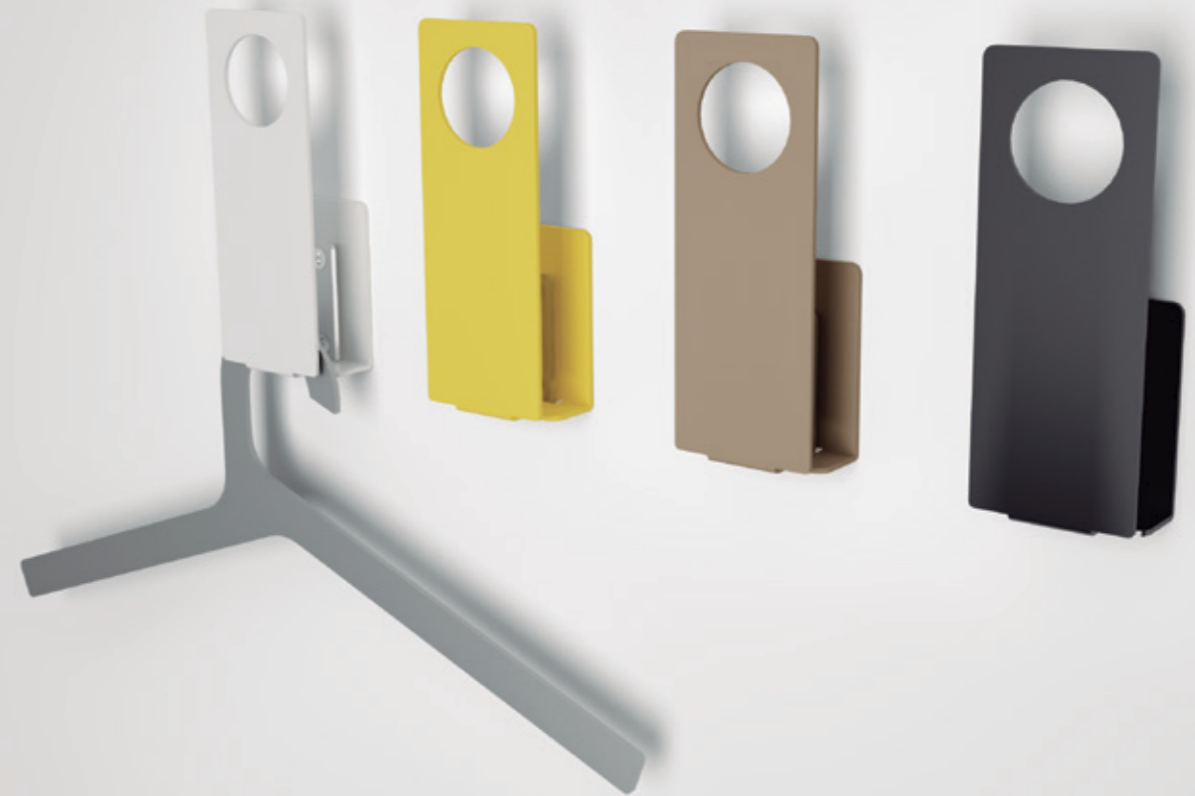
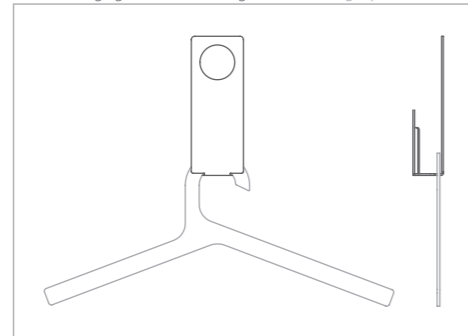


white · blanco  
RAL 9010

BURACO



It allows hanging conventional hangers · Permite coger perchas convencionales





Attractive wall hooks. The range of colours and shapes (squared and round) allows multiple compositions. Made of painted steel sheet, they have a simple mounting system.

Atractivos colgadores, la variedad de colores y formas (redondos y cuadrados) permite hacer múltiples composiciones en paredes. Fabricados en plancha de acero pintada, poseen un sencillo sistema de fijación.



grey beige  
· gris beige  
RAL 1019



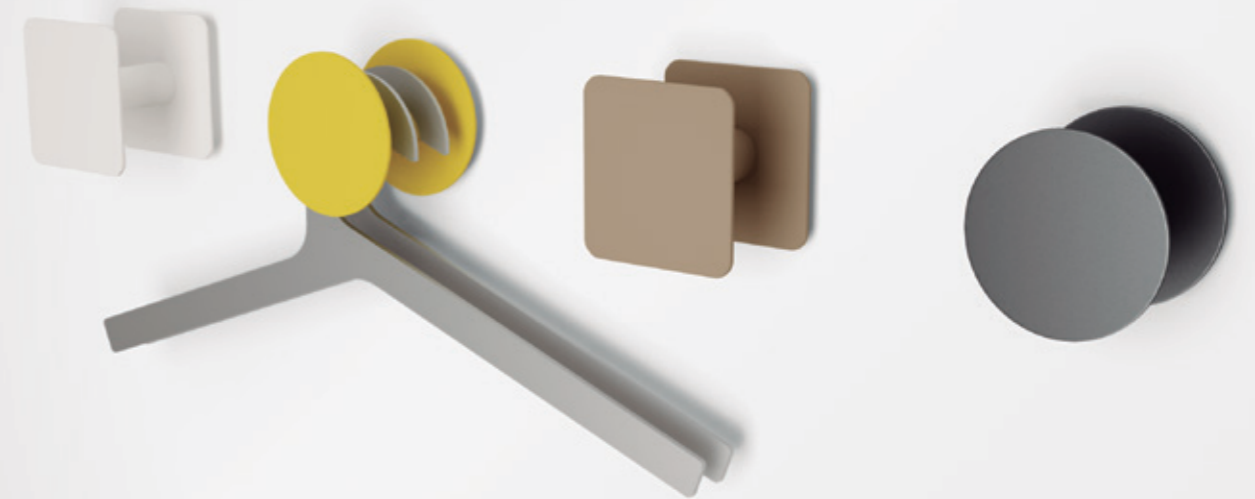
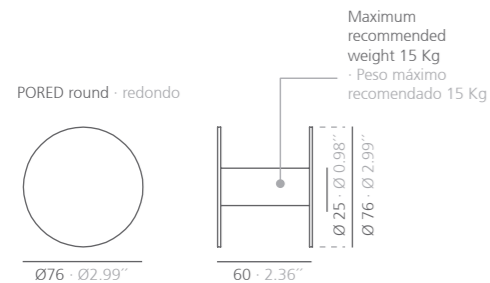
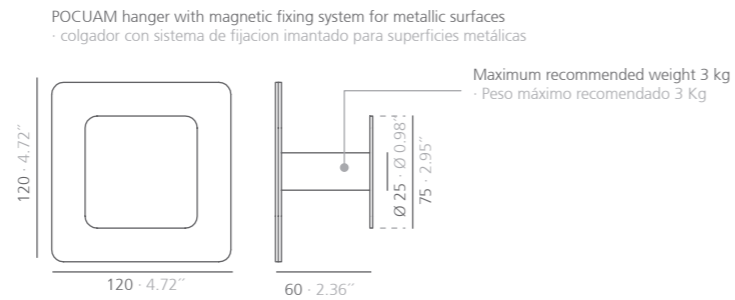
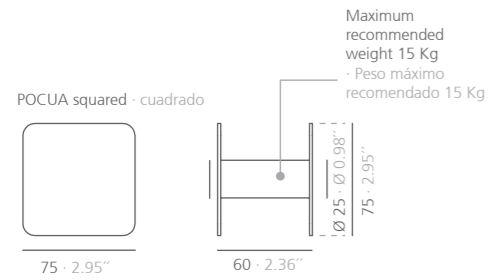
mustard  
· mostaza  
RAL 1012



black · negro  
RAL 9011



white · blanco  
RAL 9010



**TORRES**

Oficinas



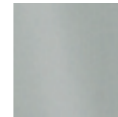




Wall rack made of aluminum available in six different lengths. The fixing system of the hangers to the profile simplifies its mounting.

Perchero de pared disponible en seis longitudes diferentes fabricado en aluminio. El sistema de fijación de los colgadores al perfil simplifica su montaje.

Structure · Estructura



anodized aluminium  
· aluminio anodizado

Hangers · Colgadores



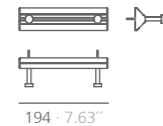
natural aluminium  
· aluminio natural

CLI1 1 hanger  
· 1 colgador



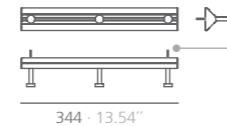
44 · 1.73"

CLI2 2 hangers  
· 2 colgadores



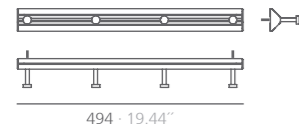
194 · 7.63"

CLI3 3 hangers  
· 3 colgadores



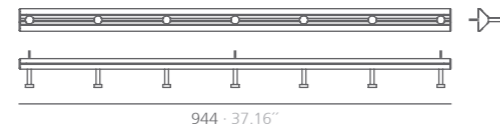
344 · 13.54"

CLI4 4 hangers · 4 colgadores



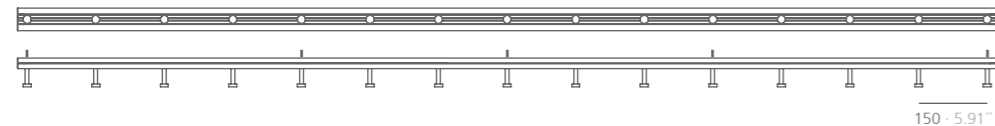
494 · 19.44"

CLI7 7 hangers · 7 colgadores



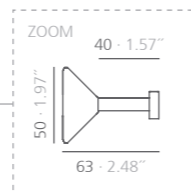
944 · 37.16"

CLI15 15 hangers · 15 colgadores



2144 · 84.41"

150 · 5.91"



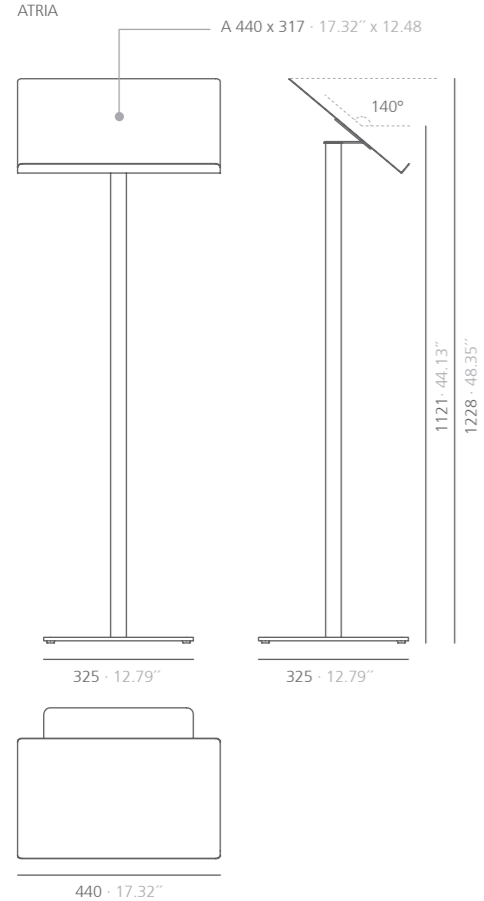
ZOOM  
40 · 1.57"  
50 · 1.97"  
63 · 2.48"



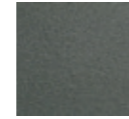


Light structure lectern, which combines materials such as column's aluminium and painted steel base and tray.

Atril de ligera estructura, combina materiales como el aluminio de la columna y el acero pintado en su base y bandeja.



Tray and base · Bandeja y base



textured forge  
grey  
· gris forja tex.



textured black  
· negro tex.  
RAL 9011



white · blanco  
RAL 9010

Column · Columna



anodized  
aluminium  
· aluminio  
anodizado





Vertical display for magazines, newspapers, catalogues, brochures...

It presents the option wall-hanged and standing, with adjustable feet or casters. Shelves may be on one side or both. Aluminium structure with anodized silver finish, steel shelves and base coated with polyester paint.

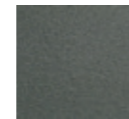
Capacity per shelf - A4 x 3.

Expositor vertical para revistas, periódicos, catálogos, folletos publicitarios...

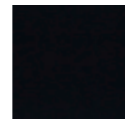
Presenta la opción de pared y de pies niveladores o ruedas. Con estantes a una cara o a ambas. Estructura de aluminio anodizado plata mate. Estantes y base de acero con revestimiento de pintura de poliéster.

Capacidad por estante - A4 x 3.

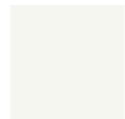
Shelves and base · Estantes y base



textured forge  
grey  
· gris forja tex.



black · negro  
RAL 9011



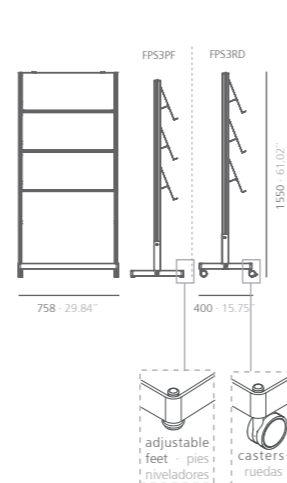
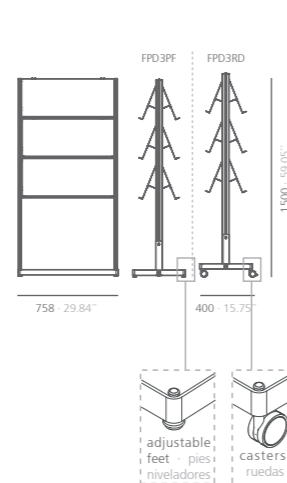
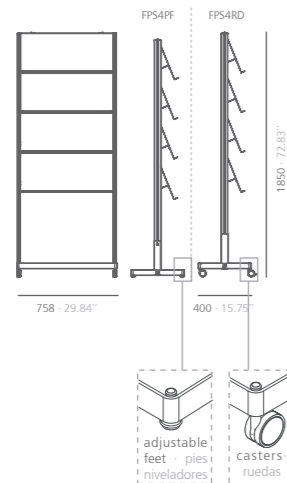
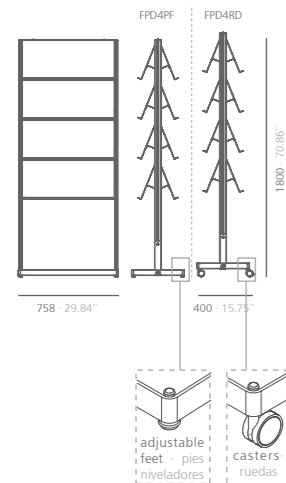
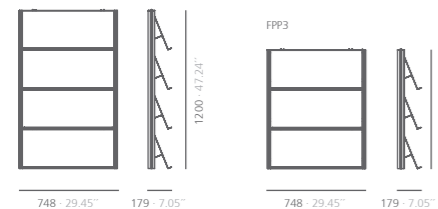
white · blanco  
RAL 9010

Columns · Columnas



anodized aluminium  
· aluminio  
anodizado

FPP4



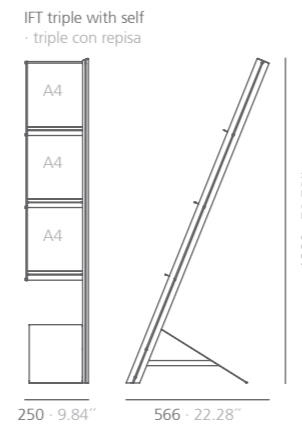
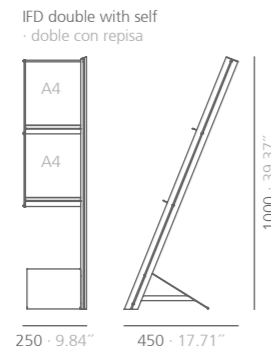
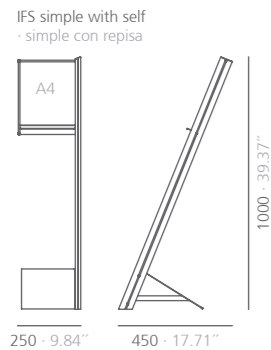
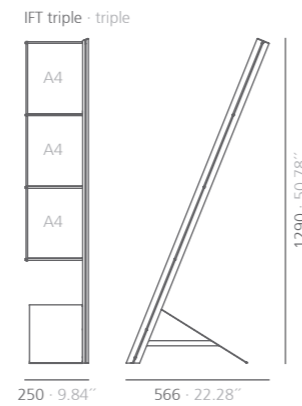
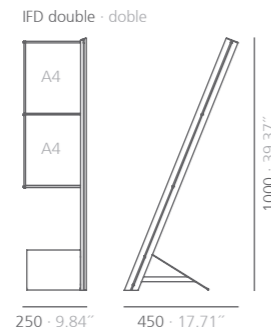
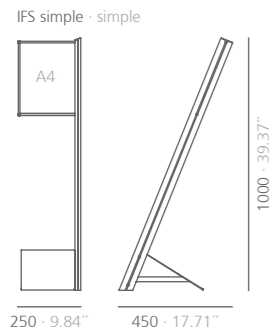
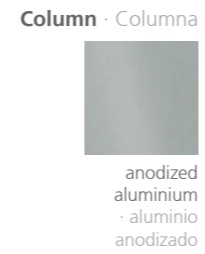
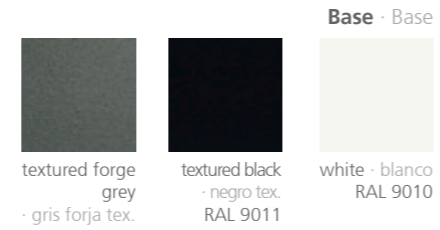
**TORRES**

Oficinas



Transparent methacrylate display (A4 format) versions: single, double or triple, with or without shelves. Aluminium column with anodized silver finish steel base coated with polyester paint.

Expositor de metacrilato transparente (formato A4), versiones: simple, doble o triple, con o sin repisas. Columna de aluminio anodizado plata mate y base de acero recubierta con pintura de poliéster.





**TORRES**  
Oficinas



# modulor

Pablo Gironés

## TORRES Oficinas

Metallic notice panels of different sizes and colours that allow adapting magnetic elements and create original wall compositions in many spaces: informative points, offices, receptions, children's rooms, etc.

Paneles informativos metálicos de diversas dimensiones y colores que permiten adaptar elementos magnéticos y crear originales composiciones de pared en múltiples espacios: puntos informativos, oficinas, recepciones, habitaciones infantiles, etc.



grey beige  
· gris beige  
RAL 1019



mustard  
· mostaza  
RAL 1012

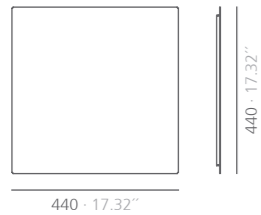


black · negro  
RAL 9011

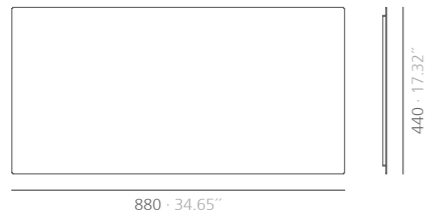


white · blanco  
RAL 9010

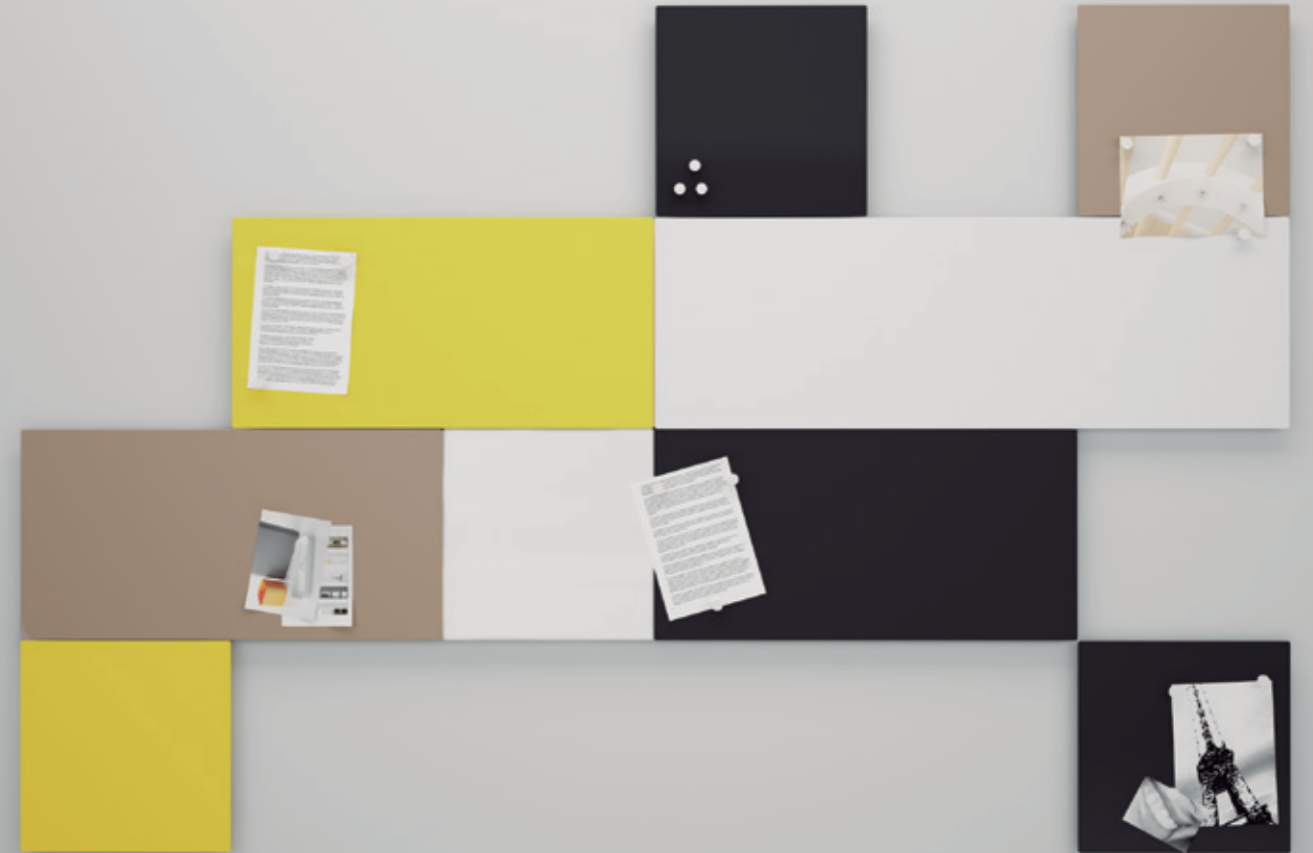
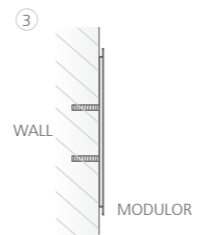
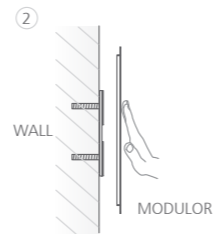
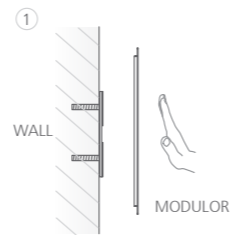
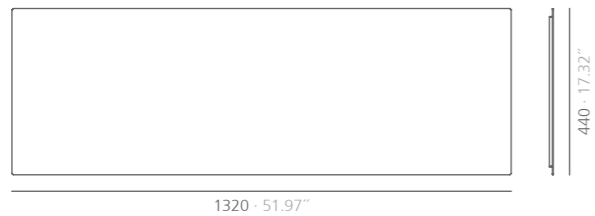
MODULOR S



MODULOR M



MODULOR L





lit

Pablo Gironés

# TORRES

Oficinas

Free standing vertical panel. Besides highlighting its function as a room divider, magnetic elements may be adapted to it as a notice panel.

It is made of steel and coated with polyester paint.

Panel vertical autoportante. Además de destacar su función como biombo para separar espacios, permite adaptar elementos magnéticos que lo convierten en un panel informativo.

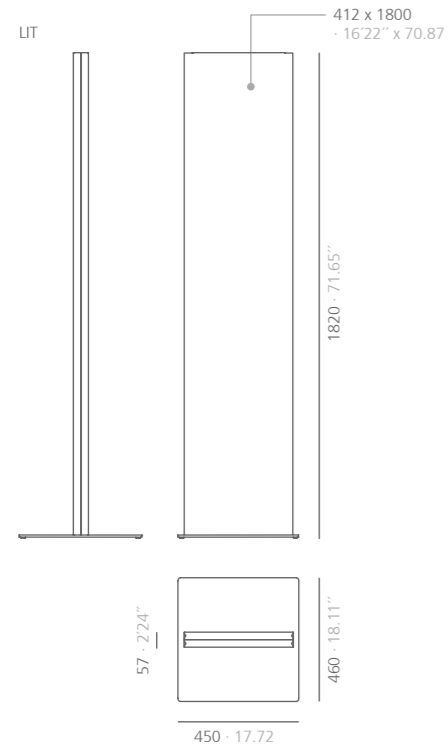
Está fabricado en acero y recubierto con pintura de poliéster.



black - negro  
RAL 9011



white - blanco  
RAL 9010

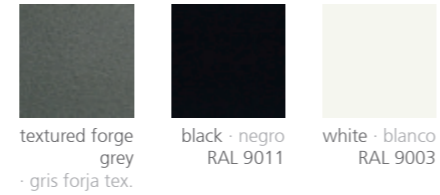




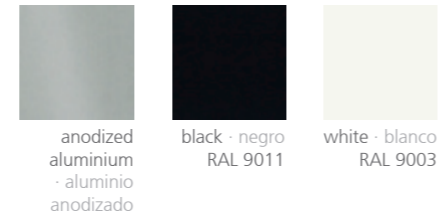
Posts collection, for delimiting public spaces. Squared aluminum column and steel base painted. 3 m (9.84 feet) tape available in black or red color.

Colección de postes para delimitar espacios públicos. Columna cuadrada de aluminio y base de acero pintado. Carrete de 3m en color negro o rojo.

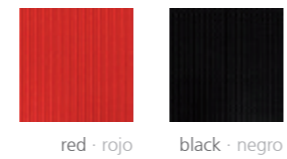
**Base, box, teexp and teche**  
- Base, caja, teexp y teche



**Column · Columna**



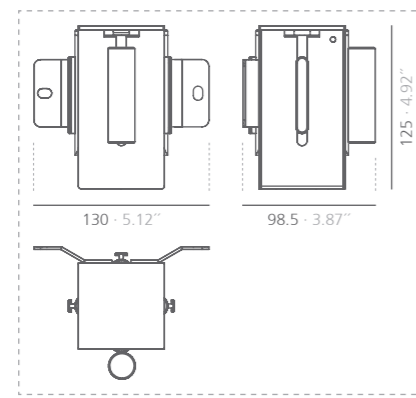
**Tensabarrier tape · Cinta tensabarrier**



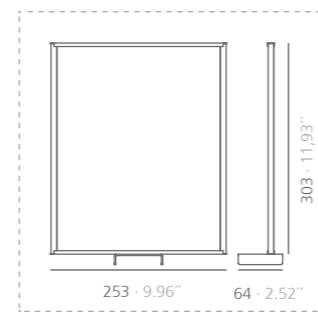
TEPIE



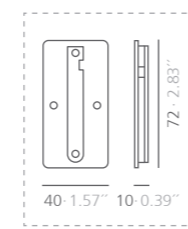
TEPA



TEEXP



TECHE



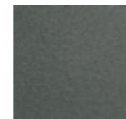
**TORRES**  
Oficinas



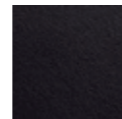
Find a welcoming space in a city in continuous movement it's not always easy. The Malva spacer's forms emerge inspired by the Mediterranean waves, a place where you can switch-off and enjoy a moment of tranquility. The Malva spacer is versatile, adaptable to a great variety of environments. Available in different colors.

Encontrar un espacio acogedor en una ciudad en continuo movimiento no siempre es fácil. Las formas del separador malva surgen de la inspiración en las olas del mediterráneo, un lugar donde desconectar y buscar un momento de tranquilidad. El separador malva es versátil, adaptable a una gran variedad de ambientes. Disponible en diferentes acabados.

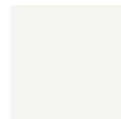
Structure · Estructura



textured forge grey · gris forja tex.



black · negro RAL 9011



white · blanco RAL 9010

Screen fabric · Tejido de screen

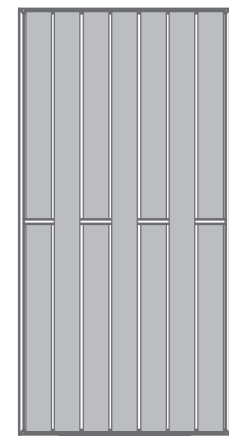


grey anthracite · gris antracita



light grey · gris claro

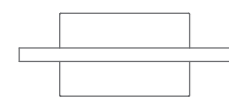
MALVA\_H7



60 / 2,36"

1920 / 75,60"

370 / 14,57"



942 / 37,08"









Original shelves designed to cover space and functionality requirements. Manufactured in painted steel sheet and has a simple wall mounting system.

Original diseño de estantes concebidos para cubrir necesidades de espacio y funcionalidad. Fabricado en plancha de acero pintado, con un sencillo sistema de fijación a pared.



grey beige ·  
gris beige  
RAL 1019



mustard ·  
mostaza  
RAL 1012



black · negro  
RAL 9011

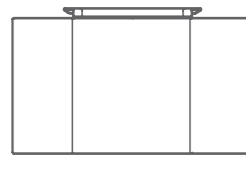


white · blanco  
RAL 9010

KOKU



71 · 2.77



283 · 11.04"

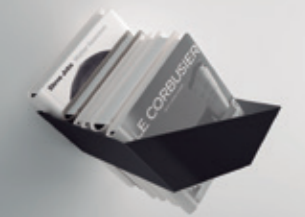
160 · 6.24"

172 · 6.71"



# TORRES

Oficinas



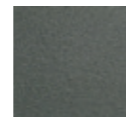
Usio shelving collection stands out for its clean and elegant line in all versions, perfect for small spaces.

Bookcase formed by an aluminium column with an anodized silver matt finish and painted steel shelves.

La colección de estanterías Usio destaca por su línea limpia y elegante en todas sus versiones, perfecta para espacios reducidos.

Librería con columna de aluminio, anodizado plata mate y estantes de acero pintados.

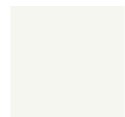
Structure · Estructura



textured forge  
grey  
· gris forja tex.



black · negro  
RAL 9011



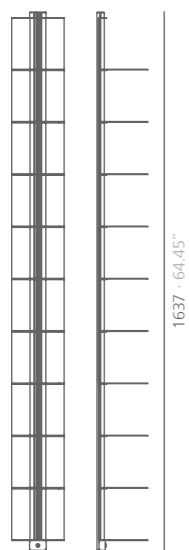
white · blanco  
RAL 9010

Columns · Columnas



anodized  
aluminium  
· aluminio  
anodizado

USP single wall hanged  
· sencilla a pared



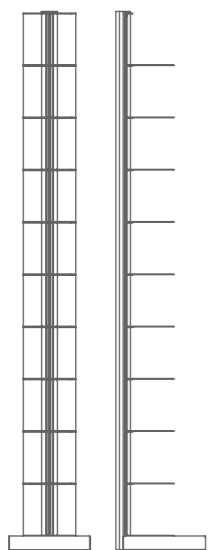
1637 · 64.45"



155 · 6.1"

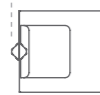
159 · 6.26"

USB single with base  
· sencilla con base



1639 · 64.53"

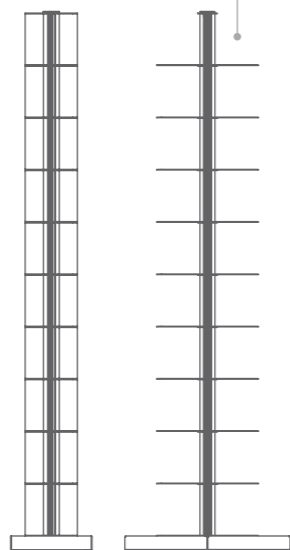
275 · 10.83"



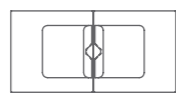
251 · 9.88"

248 · 9.76"

UDB double with base  
· doble con base

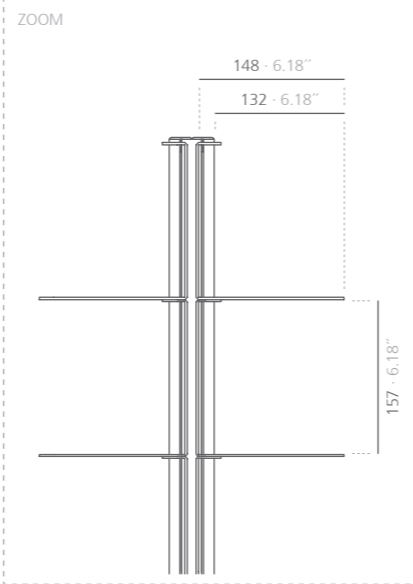


1639 · 64.53"



502 · 19.76"

248 · 9.76"

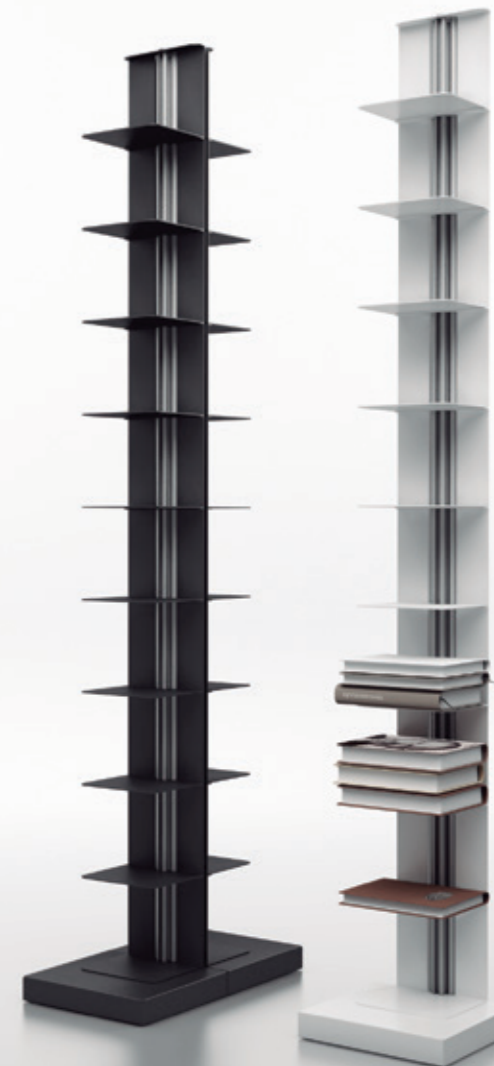


ZOOM

148 · 6.18"

132 · 6.18"

157 · 6.18"





Singular magazine rack, its structure allows the use of it as a side table in any living room or waiting area by adapting a transparent glass top. Made of light gray screen fabric and chrome plated or painted steel structure.

Singular revistero cuya estructura permite el uso como mesa auxiliar en cualquier salón o sala de espera al adaptar un sobre de cristal transparente. Fabricado con tejido de screen gris claro y estructura de acero cromada o pintada.

**Structure** · Estructura



chromed  
· cromado



black · negro  
RAL 9011



white · blanco  
RAL 9010

**Screen fabric**  
· Tejido de screen

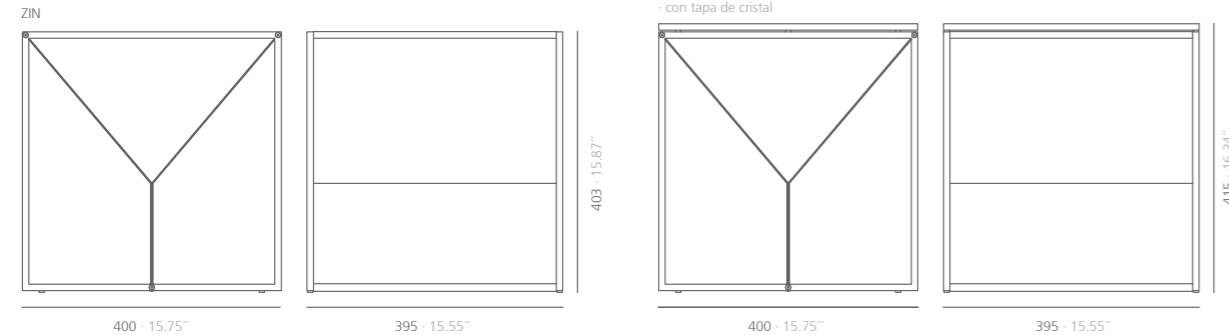


light grey  
· gris claro

**Glass top**  
· Tapa cristal



tempered glass  
· cristal templado



# TORRES

Oficinas

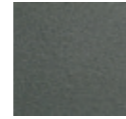




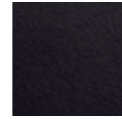
Magazine rack inspired on architectonic shapes. Made of steel sheet and coated with polyester paint.

Revistero inspirado en formas arquitectónicas. Fabricado en plancha de acero, recubierto con pintura de poliéster.

Structure · Estructura



textured forge grey · gris forja tex.

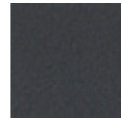


textured black · negro tex. RAL 9011

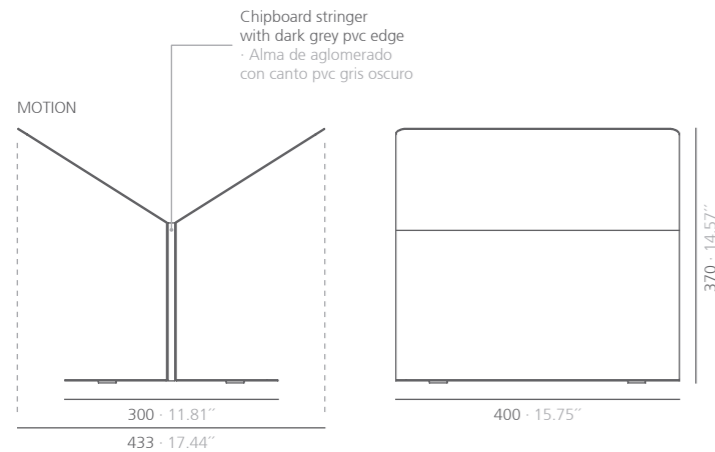


textured white · blanco tex.

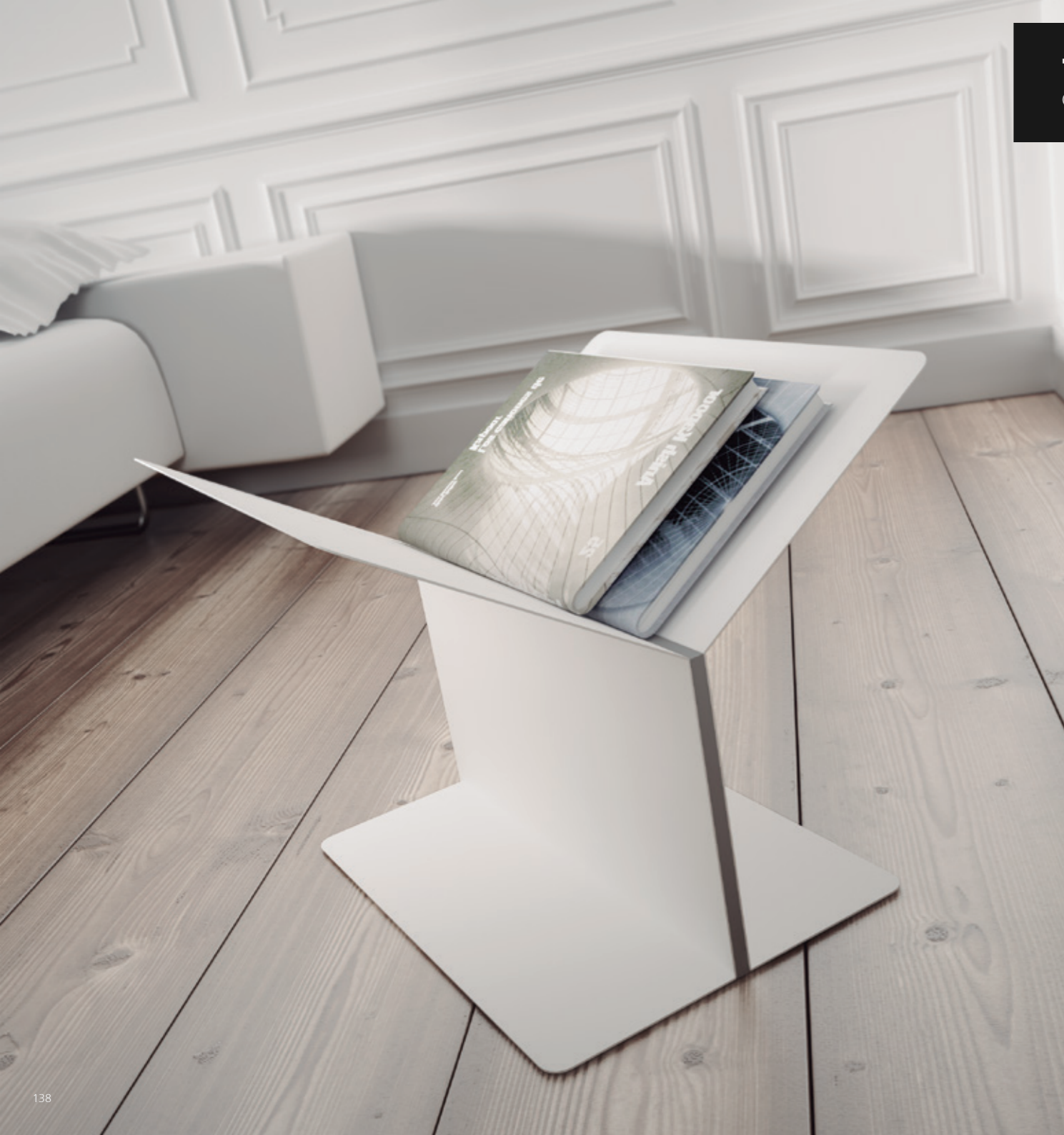
Stringer · Alma



dark grey · gris oscuro



**TORRES**  
Oficinas

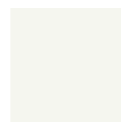


Screen in the Air, (Sita) is a support for televisions and monitors, versatile and ideal both for houses, common zones or hotel rooms. It stands out for its elegant back which hides electrical connections providing an impeccable image. Mounting interface standard VESA 75, 100, 200, 300 and 400. The monitor can rotate 240°. Its casters allows its movement. Maximum size: 55" Maximum weight: 20kg

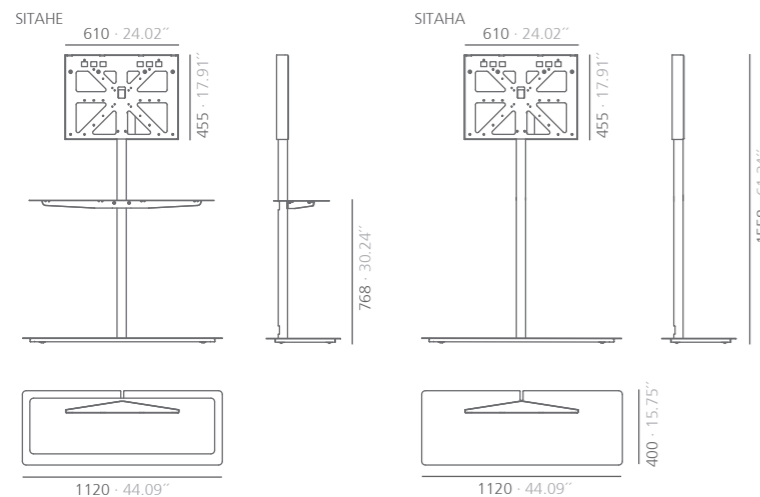
Screen In the Air (Sita) es un soporte para televisiones y monitores versátil e idóneo tanto para hogares, zonas comunes o habitaciones de hotel. Destaca por su elegante trasera que oculta las conexiones eléctricas proporcionando una imagen cuidada. Interface de montaje standar VESA 75, 100, 200, 300 y 400. El monitor se puede girar 240°. Dispone de ruedas para poder moverlo. Tamaño máximo 55". Peso máximo 20Kg



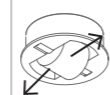
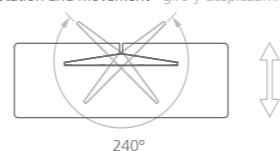
black · negro  
RAL 9011



white · blanco  
RAL 9010



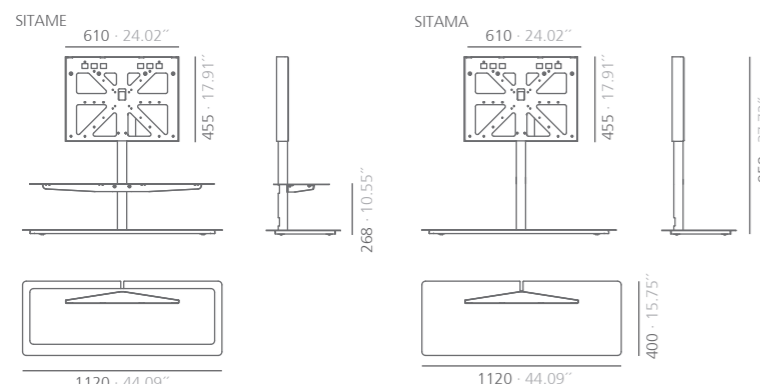
rotation and movement · giro y desplazamiento



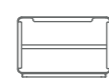
Its design includes 4 small casters which facilitate forward and backward movement · El diseño incluye 4 pequeñas ruedas que facilitan su desplazamiento hacia delante y hacia atrás.



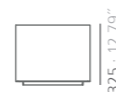
Rotary movement of the set can be obtained equipping the optional wheel kit · Para un movimiento rotatorio del SITA se ofertan otro tipo de ruedas



SITABO

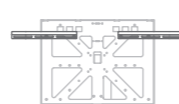


500 · 19.69"



325 · 12.79"

SITAVE  
accesorie for VESA 600 or 800  
· accesorio para VESA 600 o 800



923 · 36.34"



**TORRES**  
Oficinas



**TORRES**  
Oficinas





# SOU

Tomoya Tabuchi

# TORRES

Oficinas

Umbrella stand composed by three painted steel panels thought-out for either big or small umbrellas. Two versions are available: standing or on the wall. The base and the middle panel can be painted in a second colour.

Paragüero compuesto de 3 planos de acero pintado pensado para paraguas tanto grandes como pequeños. Dos versiones disponibles: a pie y a pared. La base y el panel del medio puede pintarse de un segundo color.

### Interior panel and base · Panel interior y base



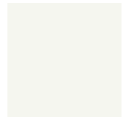
grey beige ·  
gris beige  
RAL 1019



mustard ·  
mostaza  
RAL 1012

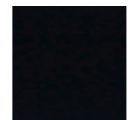


textured black ·  
negro tex.  
RAL 9011

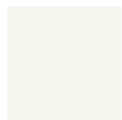


textured white ·  
blanco tex.

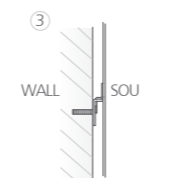
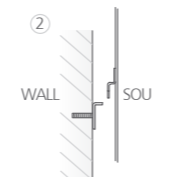
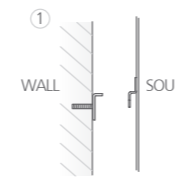
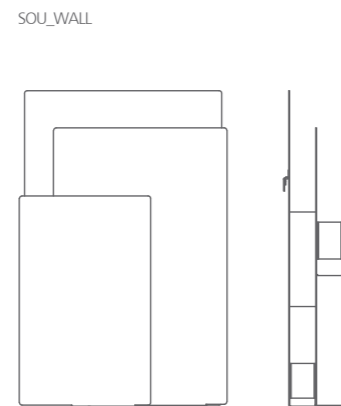
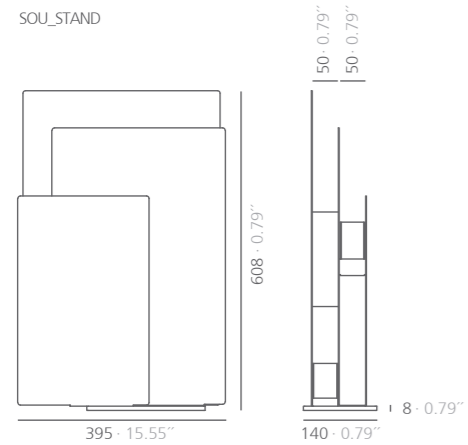
### Exterior panels · Paneles exteriores



textured black ·  
negro tex.  
RAL 9011



textured white ·  
blanco tex.



**TORRES**  
Oficinas





**TORRES**  
Oficinas

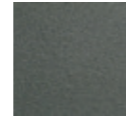


Nördic  
HOTEL

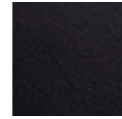
Minimalist umbrella stand made of galvanized steel sheet of 2 mm folded into a "U". The polyethylene base make it easy to dry.

Paraguero minimalista fabricado en plancha de acero cincado de 2 mm plegada en forma de "U", su base de polietileno permite su fácil secado.

Structure · Estructura



textured forge  
grey  
· gris forja tex.

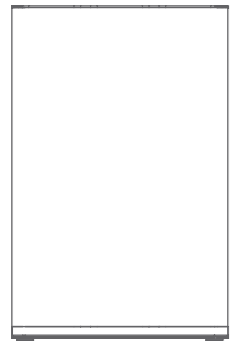


textured black  
· negro tex.  
RAL 9011



textured white  
· blanco tex.

FORREIN

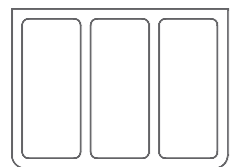


325 · 12.79"



240 · 9.45"

503 · 19.8"



88 · 3.46"

210 · 8.27"





# drop out

Paloma Gil

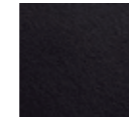
# TORRES

Oficinas

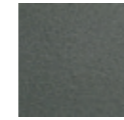
Original umbrella stand made of galvanized steel sheet with two separate buckets, one for long umbrellas and another bucket for folding ones. The colours of both can be combined.

Original paraguero de plancha de acero galvanizado con dos cubetas independientes, una destinada a los paraguas largos y otra cubeta para los plegables, se pueden combinar los colores de ambas.

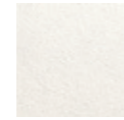
### Bucket · Cubeta



textured black  
· negro tex.  
RAL 9011



textured forge  
grey  
· gris forja tex.



textured white  
· blanco tex.

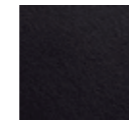
### Small bucket · Cubeta pequeña



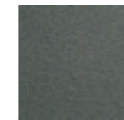
grey beige  
· gris beige  
RAL 1019



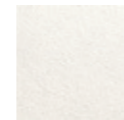
mustard  
· mostaza  
RAL 1012



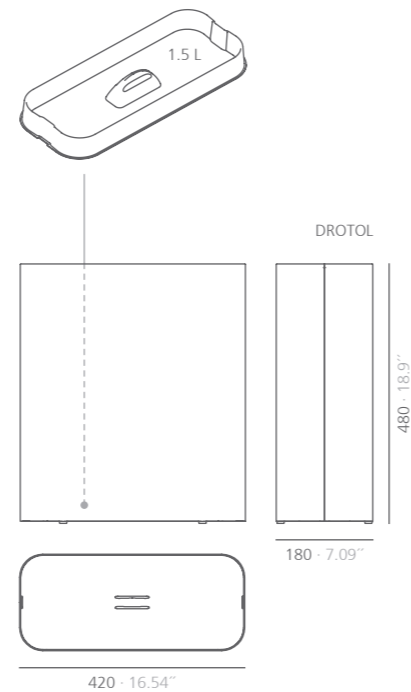
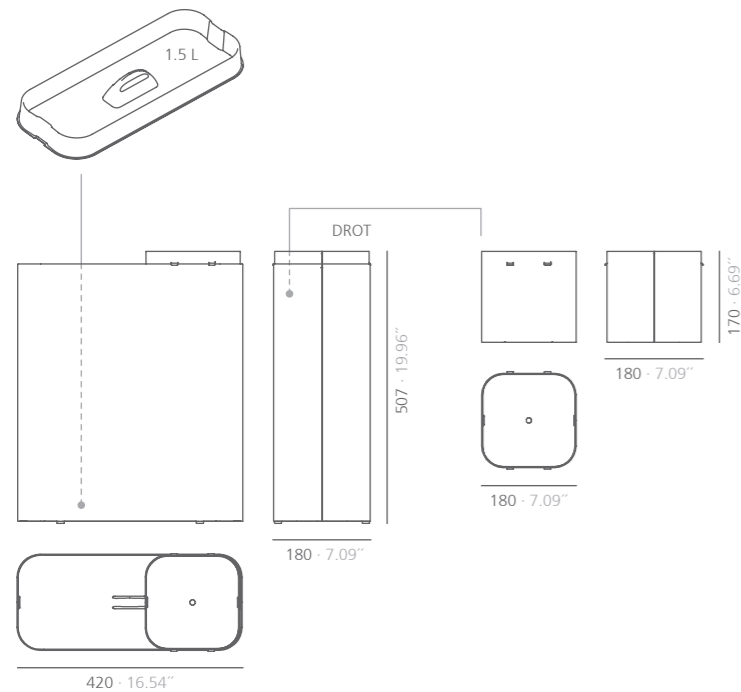
textured black  
· negro tex.  
RAL 9011



textured forge  
grey  
· gris forja tex.



textured white  
· blanco tex.



mm · inches

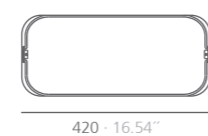
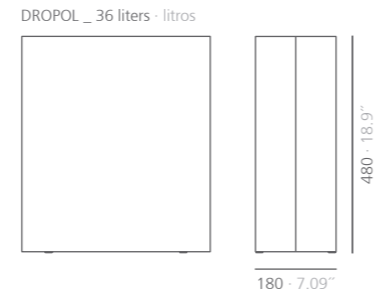
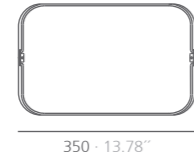
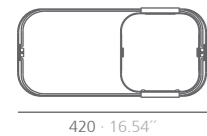
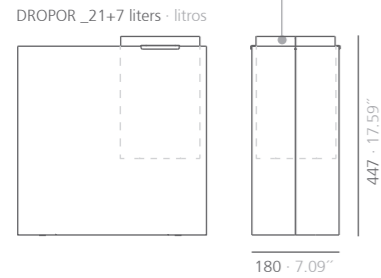
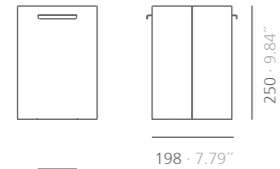


**TORRES**  
Oficinas



Paper bin made of galvanized steel that includes a stainless steel hoop that allows hiding the plastic bag in its interior, keeping the elegance of the element.

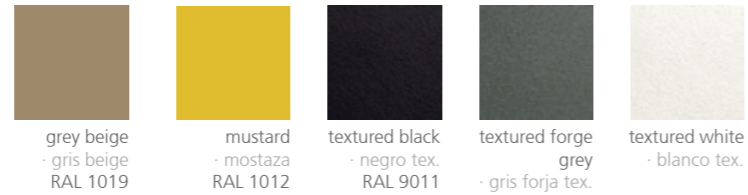
Elegante papelera de acero galvanizado que incluye un aro de acero inoxidable que sujeta y ayuda a ocultar la bolsa, consiguiendo una línea limpia.



Structure · Estructura



Small bucket · Cubeta pequeña



**TORRES**  
Oficinas



Discrete fire extinguisher support made of painted steel sheet. Its casters allow its easy movement.

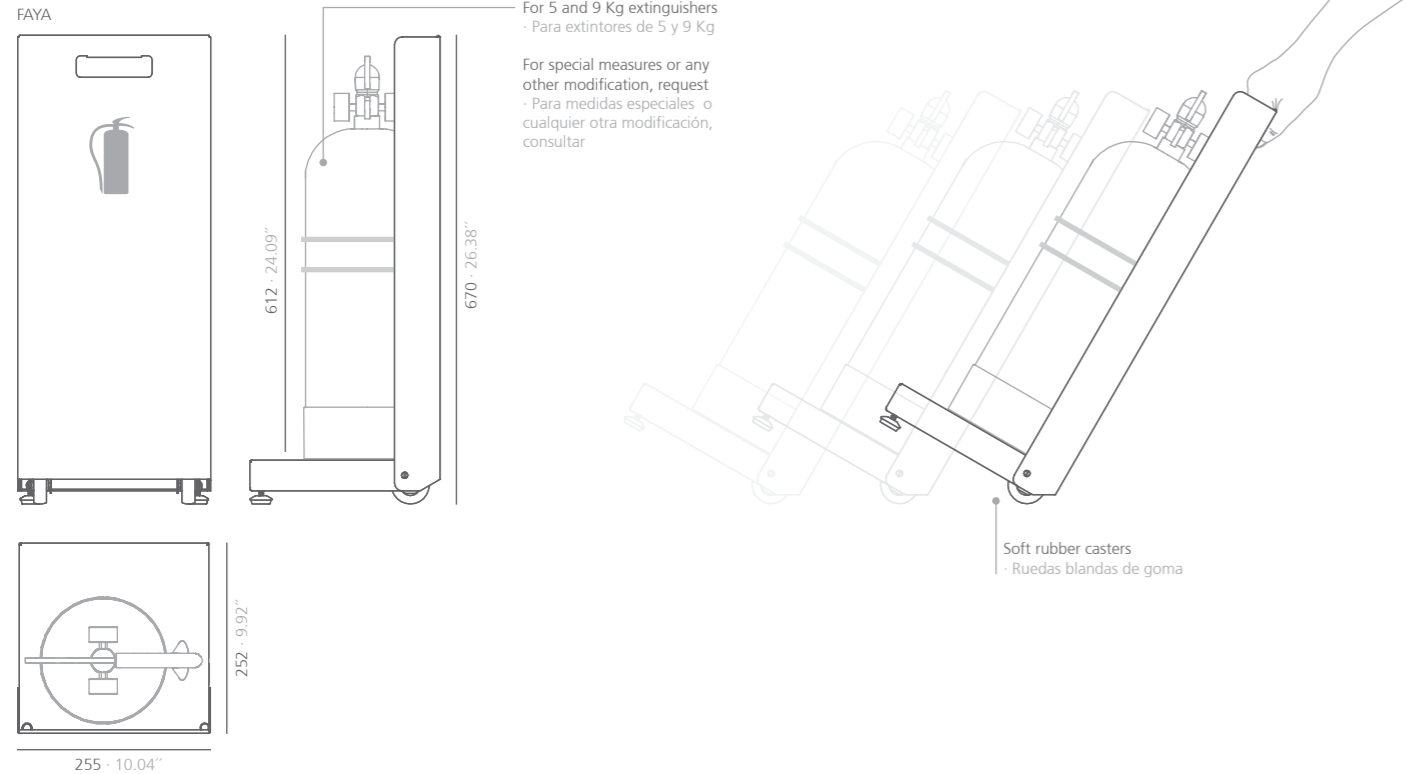
Discreto soporte para extintores fabricado en plancha de acero pintada. Sus ruedas permiten un cómodo desplazamiento.



black - negro  
RAL 9011



white - blanco  
RAL 9010







Ashtray column made of aluminium and painted. Both versions, wall hanged and self-standing, feature a sealed tank that reduces smoke and smells.

Columna cenicero de aluminio pintado. Ambas versiones, a pared y de pie, cuentan con un depósito sellado que reduce el humo y los malos olores.

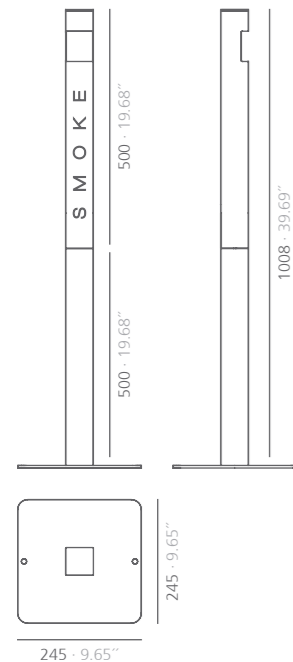


black - negro  
RAL 9011

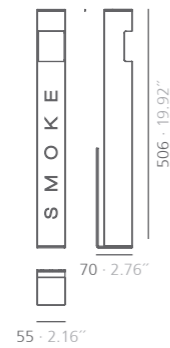


white - blanco  
RAL 9010

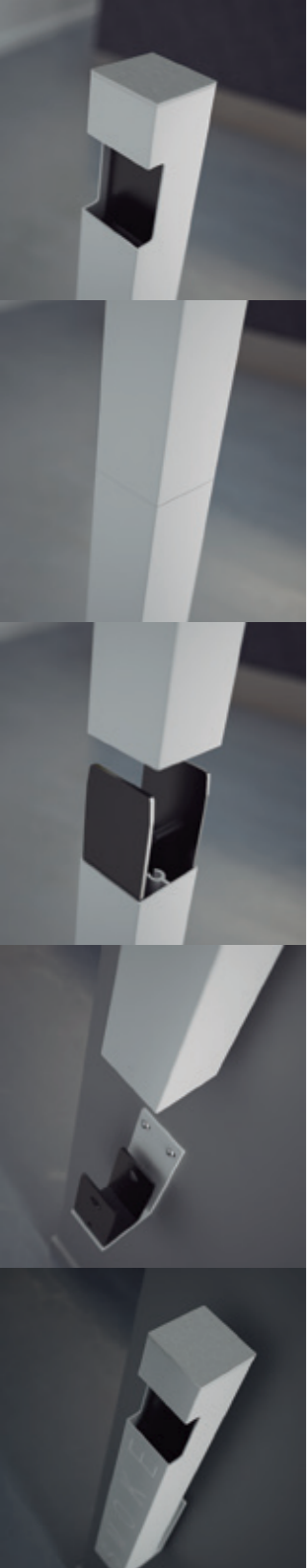
FUMPI self standing ashtray column  
· columna cenicero de pie  
Capacity: 0.7 liters · capacidad: 0.7 litros



FUMPA wall hanged ashtray column  
· columna cenicero pared  
Capacity: 0.7 liters · capacidad: 0.7 litros



**TORRES**  
Oficinas





# laura

Mermelada Estudio

**TORRES**  
Oficinas

Laura is the Systemtronic's most versatile and functional table created. This little table has so many possibilities as you can imagine. We like to see it on a chill out, in a waiting room... where can you imagine it?

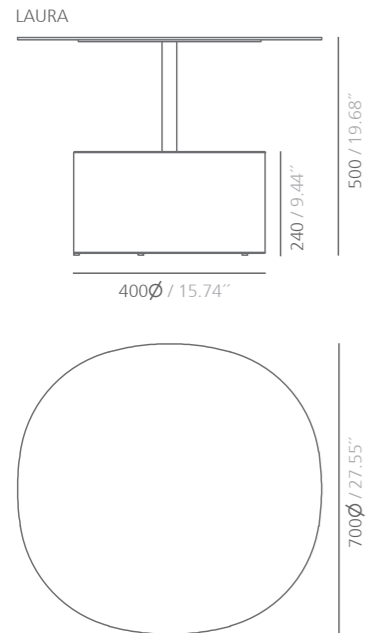
Laura es la mesa Systemtronic más versátil y funcional. Esta mesa auxiliar tiene tantas posibilidades como pueda idear. A nosotros nos gusta recordarla en una terraza chill out, en una sala de espera... y tú, ¿dónde te la imaginas?



black - negro  
RAL 9011



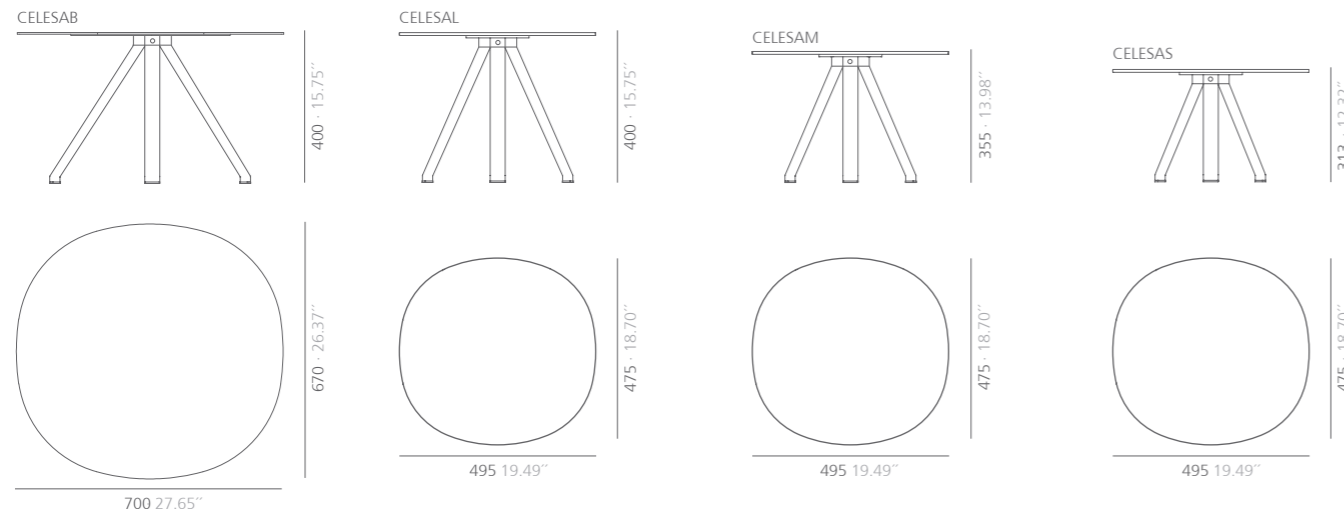
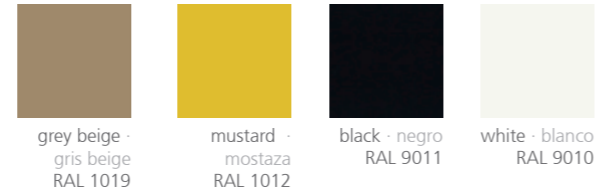
white - blanco  
RAL 9010





The set of Celes tables presents the solution of a geometrical combination which revolutionizes the minimalistic trend, by daring curves which generates a game of lights and shadows. Table top and structure of aluminium for uses in roofed outdoors.

El conjunto de mesas Celes presenta una combinación geométrica que revoluciona la tendencia minimalista con curvas que generan un juego de luces y sombras. Con sobre y estructura de aluminio para exteriores techados.



**TORRES**  
Oficinas







Wide collection of tables, with table tops in HPL and glass, ideal for contract projects. Central column made of anodized aluminum available in three heights and coated steel base with polyester paint.

Amplia colección de mesas con sobres en compacto (HPL) y cristal, ideales para proyectos contract. Columna central de sección cuadrada en tres alturas, fabricada en aluminio anodizado y base de acero recubierta con pintura de poliéster.

**Glass tabletop**

· Sobre de cristal



tempered glass  
· cristal templado

**Outdoor version: HPL tabletop**

· Versión exterior: Sobre HPL (compacto)



black soft  
· negro soft

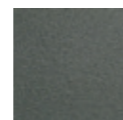


white soft  
· blanco soft

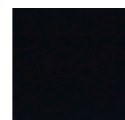
**Column** · Columna



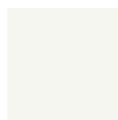
anodized aluminium  
· aluminio anodizado



textured forge grey  
· gris forja tex.



black · negro  
RAL 9011

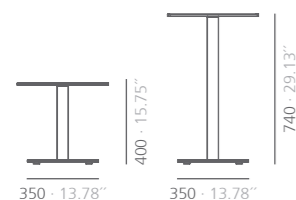


white · blanco  
RAL 9010

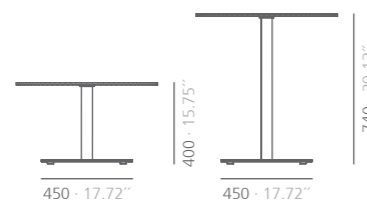
**Base** · Base

Consult for special dimensions or any other modification  
· Para medidas especiales o cualquier otra modificación consultar.

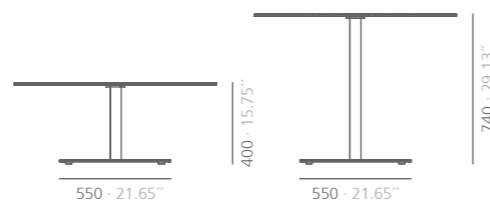
A □ 450 x 450 · □ 17.72" x 17.72"  
B Ø 450 · Ø17.72"



A □ 700 x 700 · □ 27.56" x 27.56"  
B Ø 700 · Ø27.56"



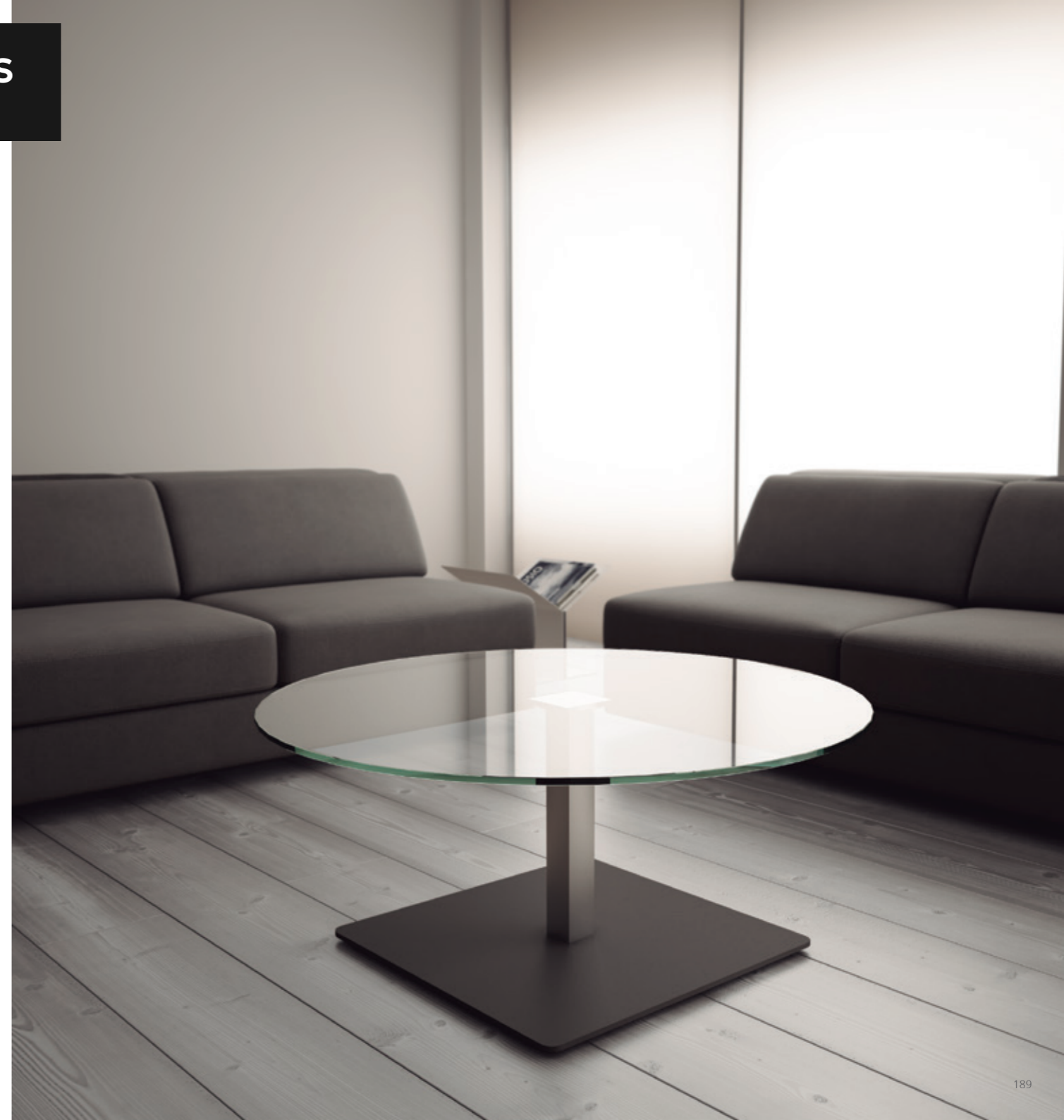
B Ø 900 · Ø35.43"



mm · inches



**TORRES**  
Oficinas



The table tops of this collection are available in lacquered MDF or transparent tempered glass of 3,94" that combine with two versions of bases. The finish of the bases can be white, black or forge grey, the "Y" shaped bases can also be chromed.

Los sobres de esta colección de mesas están disponibles en MDF lacado o cristal templado transparente de 10mm que combinan con dos versiones de bases. El acabado de las bases puede ser en blanco, negro o gris forja, las bases en forma de "Y" además pueden ser cromadas.

**Glass tabletop**  
· Sobre de cristal



tempered glass  
· cristal templado

**Lacquered MDF tabletop**  
· Sobre de MDF lacado



black soft  
· negro soft

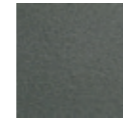


white · blanco

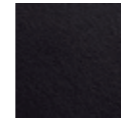
**Structure** · Estructura



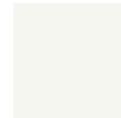
chromed  
· cromado



textured forge  
grey  
· gris forja tex.

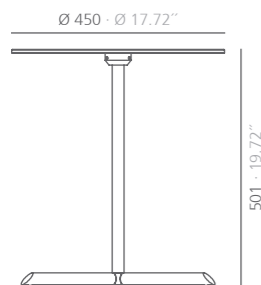


black · negro  
RAL 9011

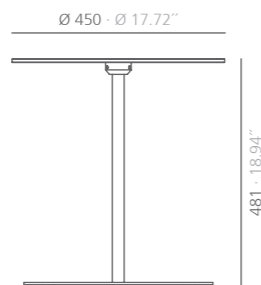


white · blanco  
RAL 9010

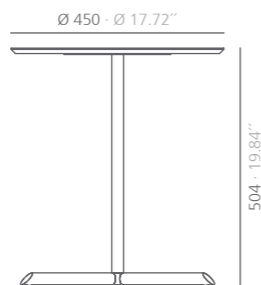
MIYC  
glass top and "Y" base  
· sobre de cristal y base "Y"



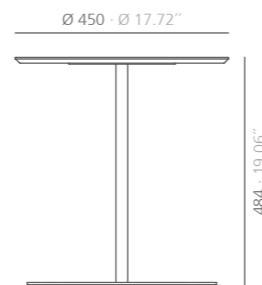
MIOC  
glass top and base "O" base  
· sobre de cristal y base "O"



MIYM  
laquered MDF top and "Y" base  
· sobre de MDF lacado y base "Y"



MIOM  
laquered MDF top and "O" base  
· sobre de MDF lacado y base "O"



mm · inches

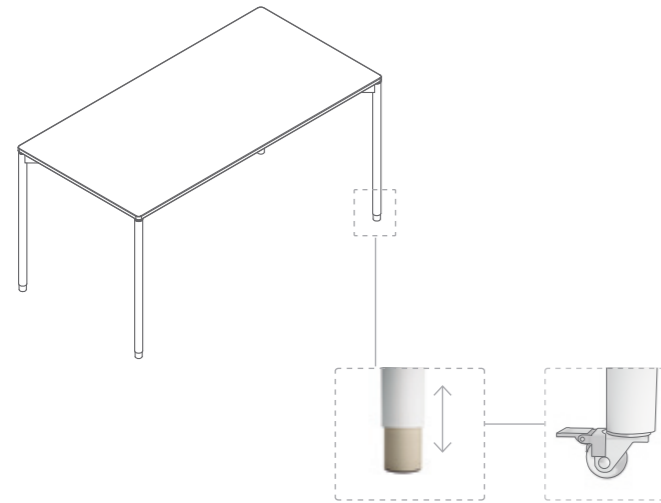


**TORRES**  
Oficinas




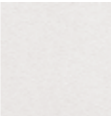
Set of tables designed to be combined between them being able to make different floor dispositions for offices where versatility is necessary.





Conjunto de mesas diseñadas para ser combinadas entre sí permitiendo múltiples disposiciones en planta para oficinas donde la versatilidad es imprescindible.



			
grey beige · gris beige RAL 1019	mustard · mostaza RAL 1012	black · negro RAL 9011	white · blanco RAL 9010
<b>Legs · Patas</b>			
			
grey beige · gris beige RAL 1019	mustard · mostaza RAL 1012	black · negro RAL 9011	white · blanco RAL 9010
<b>Legs · Pies</b>			

**Melamine chipboard tabletop**  
· Sobre de aglomerado melamínico

	
black soft · negro soft	white soft · blanco soft

-  600x600  
· 23.62" x 23.62"
-  750x750  
· 29.52" x 29.52"
-  600x1200  
· 23.62" x 47.24"
-  750x1500  
· 29.52" x 59.05"





**TORRES**  
Oficinas







Auxiliary personal furniture, designed to optimize workspaces thanks to its functionality and mobility, thought-out to hold handbags, jackets, wallets, bags, phones, tablets, laptops, and any kind of personal object. Includes a handle which facilitates it's movement, a magazine rack and a shelf adapted to support drinks and to hold up little objects. Both complements can be hanged on one side or another to improve the ergonomoy of the user.

Mueble auxiliar personal diseñado para optimizar los espacios de trabajo por su funcionalidad y movilidad, pensado para contener bolso, chaqueta, cartera, mochila, móvil, tablet, portátil y cualquier tipo de objeto personal. Incluye un tirador que facilita su desplazamiento, un revistero y un estante adaptado para sostener bebidas y apoyar objetos pequeños, ambos complementos pueden colocarse a un lado u otro del mueble para mejorar la ergonomía del usuario.

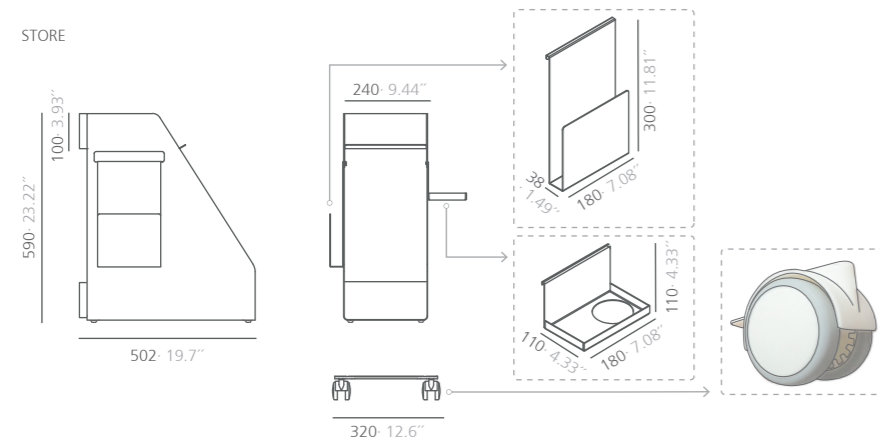
Structure · Estructura



Magazine rack and shelf · Revistero y estante



STORE





Very stable working tables with a lightweight aluminum structure. This model is available with two types of legs. The tabletops can be soft melamine chipboard, HPL.

Mesas de trabajo muy estables y ligeras con estructura de aluminio. Este modelo está disponible en dos modelos de pies. Los sobres de las mesas pueden ser de tablero aglomerado acabado melamina soft o compacto HPL.

**Melamine chipboard tabletop**

· Sobre aglomerado melamínico



black soft  
· negro soft

white soft  
· blanco soft

**Outdoor version: HPL tabletop**

· Versión exterior: Sobre HPL (compacto)



black soft  
· negro soft

white soft  
· blanco soft

**Glass tabletop**

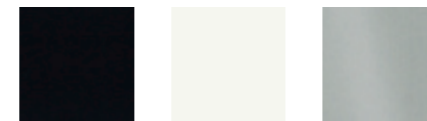
· Sobre de cristal



tempered glass  
· cristal templado

**Structure**

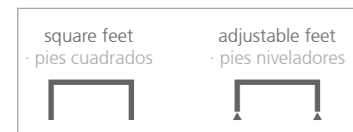
· Estructura



black · negro  
RAL 9011

white · blanco  
RAL 9010

anodized aluminium  
· aluminio  
anodizado



1600x800  
· 62.99" x 31.50"

1800x600  
· 70.87" x 23.62"

1800x800  
· 70.87" x 31.50"

Consult for special dimensions or any other modification  
· Para medidas especiales o cualquier otra modificación consultar.





# office set

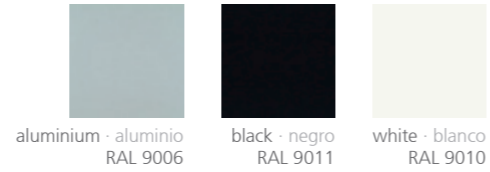
STC Studio

# TORRES

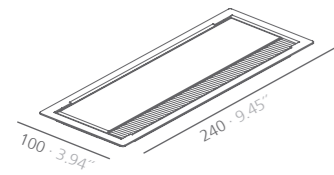
Oficinas

Set of accessories that allows the organization of office items in working spaces.

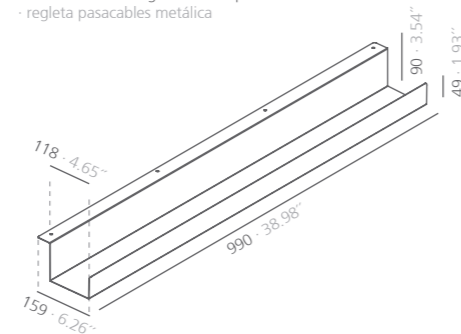
Serie de accesorios que permiten la organización de los elementos de oficina en espacios de trabajo.



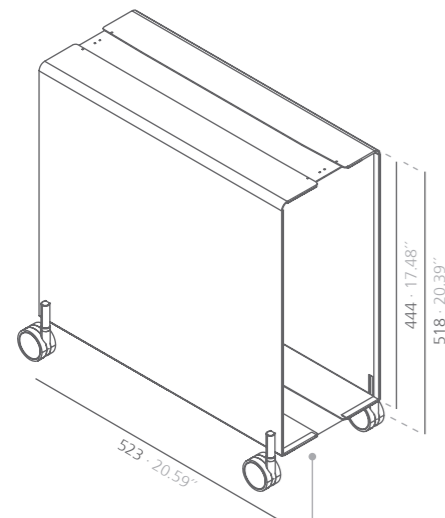
SWIRE rectangular desktop grommet metallic and laquered  
· pasacables rectangular de sobremesa metálico y lacado



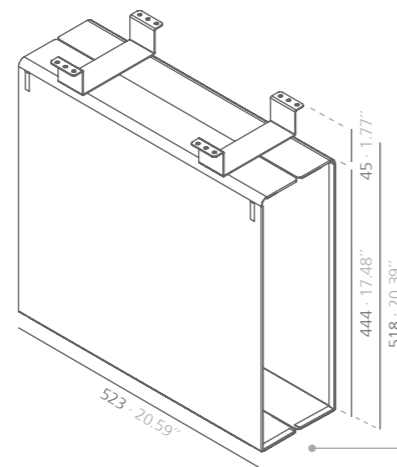
OMEGASTC metal grommet strip  
· regleta pasacables metálica



CPURD cpu casters support  
· soporte cpu con ruedas



CPUSTC cpu hanging support  
· soporte cpu colgante



Width adjustable in 3 positions  
5.90" - 7.87" - 9.84"  
· Ancho regulable en 3 posiciones  
150 - 200 - 250 mm



# office set

STC Studio

# TORRES

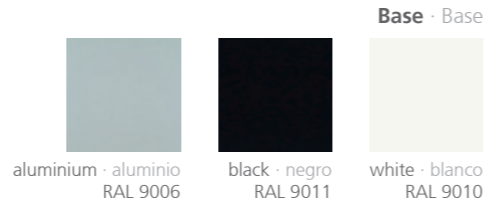
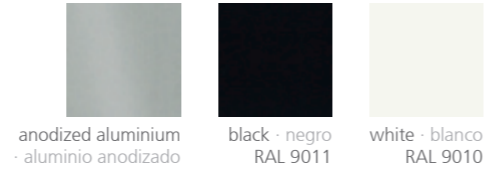
Oficinas

## WIRE

Freestanding aluminium column to hide cables, with two versions: single or double. It includes a black brush on its side that allows inserting and removing cables easily. Its base is designed for facilities with technical floors.

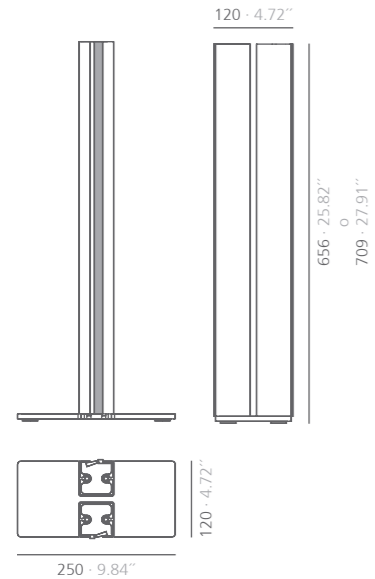
Columna autoportante de aluminio para ocultar cables, dos versiones: sencilla o doble. Incluye un cepillo negro en el lateral que permite introducir y extraer cables fácilmente. Su base está diseñada para instalaciones con suelos técnicos.

### Column · Columna

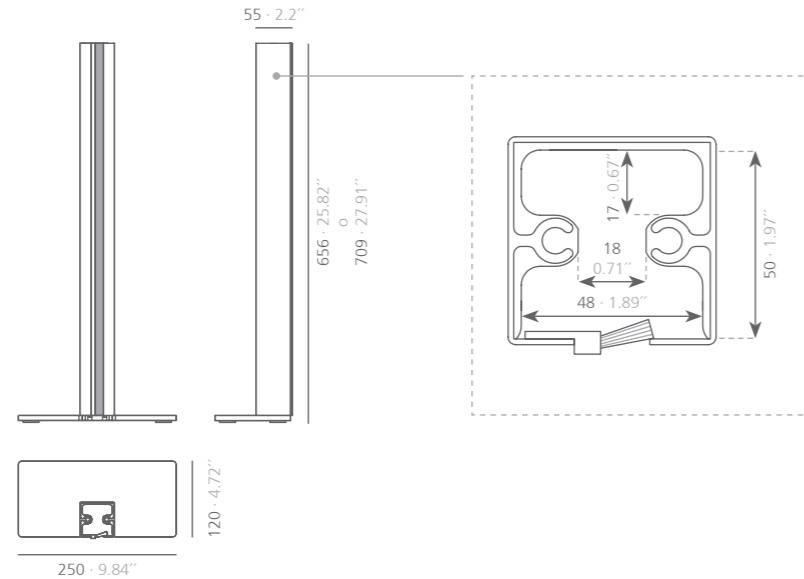


### Base · Base

WID double · doble



WIS simple · simple



mm · inches



# office set

STC Studio

# TORRES

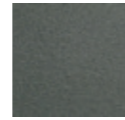
Oficinas

## SUPPORT

This laptop stand allows you to adapt ergonomically to the correct position while working.

Este soporte para ordenador portátil permite adoptar una postura ergonómicamente correcta durante el trabajo.

## Structure and base · Estructura y base



textured forge  
grey  
· gris forja tex.



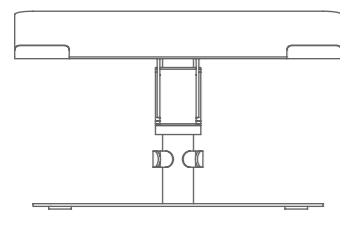
white · blanco  
RAL 9010

## Column · Columna

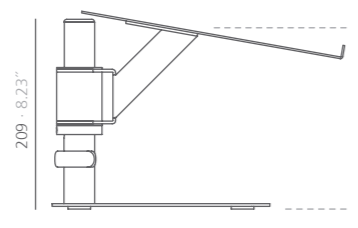


anodized  
aluminium  
· aluminio  
anodizado

## SUPPORT



320 · 12.59"



240 · 9.44"

Height regulation  
7.87" - 9.84"  
· Regulación en altura  
200 - 250 mm

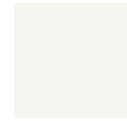




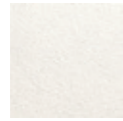


**Paint colours for metal**

· Colores de pintura para metal



white · blanco  
RAL 9010



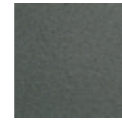
textured white  
· blanco tex.



black · negro  
RAL 9011



textured black  
· negro tex.  
RAL 9011



textured forge  
grey  
· gris forja tex.



aluminium  
· aluminio  
RAL 9006



grey beige  
· gris beige  
RAL 1019



mustard  
· mostaza  
RAL 1012

**Leatherette**

· Polipiel



black · negro



white · blanco



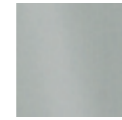
beige · beige



red · rojo

**Metallic finishes**

· Acabados metálicos



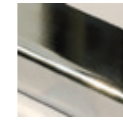
anodized  
aluminium  
· aluminio  
anodizado



sandblaster  
aluminium  
· aluminio  
arenado



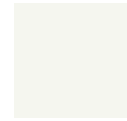
natural  
aluminium  
· aluminio  
natural



chromed steel  
· acero cromado

**Laquered MDF tabletop**

· Sobre de MDF lacado



white · blanco



black soft  
· negro soft

**Melamine chipboard tabletop**

· Sobre de aglomerado melamínico



white soft  
· blanco soft



black soft  
· negro soft

**Outdoor version: HPL tabletop**

· Versión exterior: Sobre HPL (compacto)



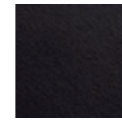
black soft  
· negro soft



white soft  
· blanco soft

**plywook tabletop**

· Sobre contrachapado



black · negro

**Glass tabletop**

· Sobre de cristal



tempered glass  
· cristal templado

**Wood**

· Madera



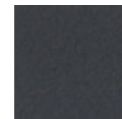
beech wood  
· haya



oak wood  
· roble

**Stringer**

· Alma



dark grey  
· gris oscuro

**Trim**

· Embellecedor



ice · hielo

**Tensabarrier tape**

· Cinta tensabarrier



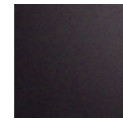
black · negro



red · rouge

**Methacrylate**

· Metacrilato



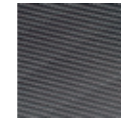
black · negro



white · blanco

**Screen fabric**

· Tejido de screen



grey anthracite  
· gris antracita



light grey  
· gris claro

**TORRES**  
Oficinas

Conde de Aranda, 124  
50003, Zaragoza  
Tels. 976 436 211 / 976 436 305  
[www.torresoficinas.com](http://www.torresoficinas.com)



Quality Controlled

ASSOCIATED N°00320 **AIDIMA** FURNITURE, WOOD AND PACKAGING TECHNOLOGY INSTITUTE